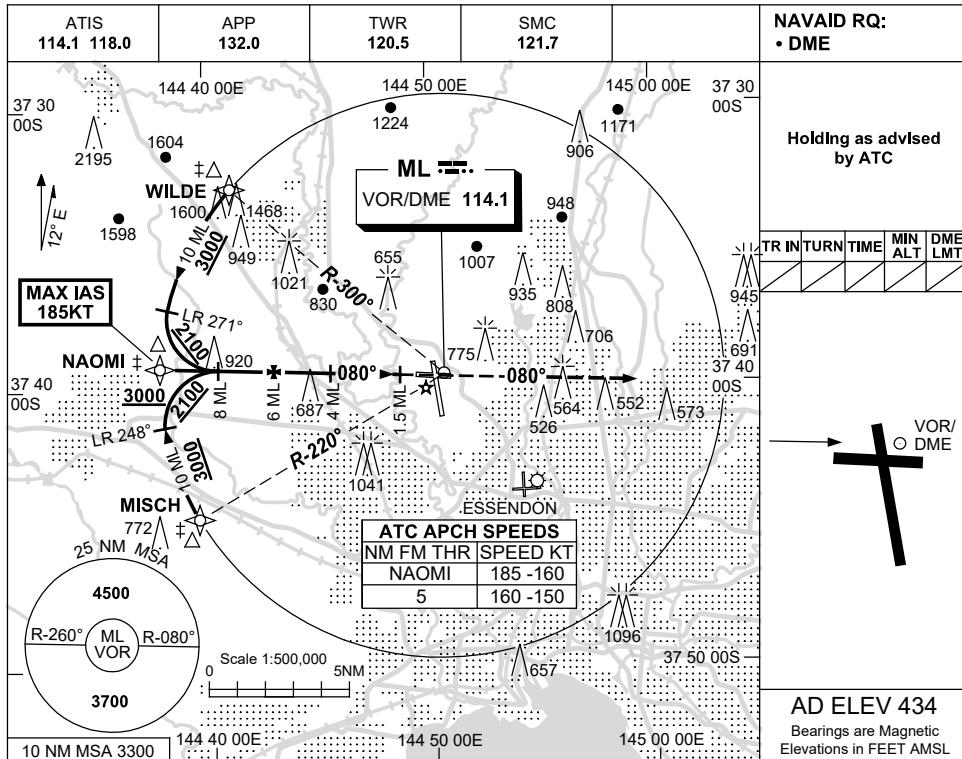


USE QNH

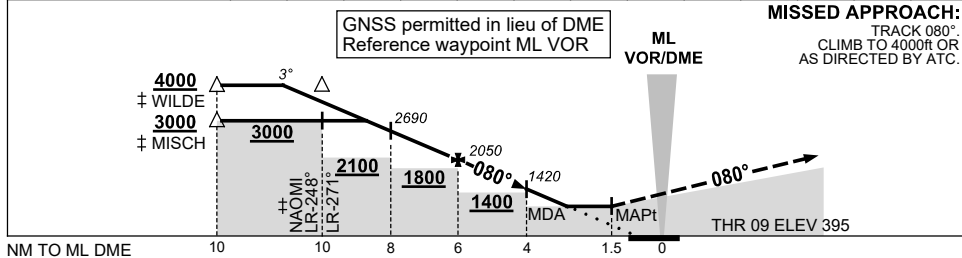
VOR RWY 09

MELBOURNE, VIC (YMML)

21 MAR 2024



DIST TO ML DME	9	8	7	6	5	4	3	2.5				
ALT (3° APCH PATH)	3000	2690	2370	2050	1740	1420	1100	950				



CATEGORY	A	B	C	D
S-I VOR/DME	950 (555-3.2)			
CIRCLING	1140 (706-2.4)	1450 (1016-4.0)	1600 (1166-5.0)	
ALTERNATE ‡	(1206-4.4)	(1516-6.0)	(1666-7.0)	

- NOTES**
1. MAX IAS:
NAOMI : 185KT.
 - ‡ 2. SPECIAL ALT MNM NOT APPLICABLE.
 - ‡ 3. ACFT MAY BE RADAR VECTORED TO IAF.

Changes: VAR.

MMLV001-178