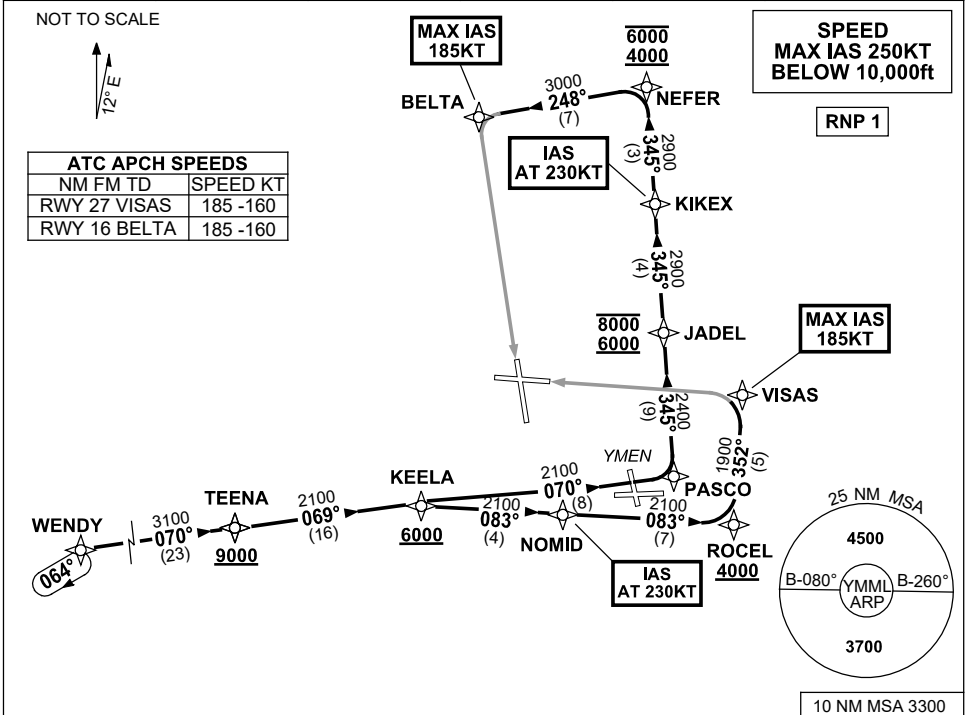


**STANDARD INSTRUMENT ARRIVAL (STAR)
WENDY ONE ALPHA ARRIVAL (RNAV) RWY 16/27
MELBOURNE, VIC (YMML)**

21 MAR 2024

| | | | | |
|---------------------|--------------------|--------------|--------------|--|
| ATIS 114.1 118.0 | APP 129.4 132.0 | TWR 120.5 | SMC 121.7 | Beatings are Magnetic Elevations in FEET AMSL |
|---------------------|--------------------|--------------|--------------|--|



ARRIVAL: WENDY ONE ALPHA
From WENDY track 070° to TEENA; then:

RWY 16:

- **Cross TEENA AT or ABV 9000ft**
- From TEENA track 069° to KEELA
- **Cross KEELA AT or ABV 6000ft**
- Track 070° to PASCO
- Turn LEFT, track 345° to JADEL
- **Cross JADEL BTN 6000ft and 8000ft**
- Track 345° to KIKEX
- **IAS AT 230KT from KIKEX**
- Track 345° to NEFER
- **Cross NEFER BTN 4000ft and 6000ft**
- Turn LEFT, track 248° to BELTA
- **MAX IAS 185KT from BELTA**
- Track via GLS RWY 16 or ILS RWY 16 or RNP Z RWY 16 or LOC RWY 16

RWY 27:

- **Cross TEENA AT or ABV 9000ft**
- From TEENA track 069° to KEELA
- **Cross KEELA AT or ABV 6000ft**
- Turn RIGHT, track 083° to NOMID
- **IAS AT 230KT from NOMID**
- Track 083° to ROCEL
- **Cross ROCEL AT or ABV 4000ft**
- Turn LEFT, track 352° to VISAS
- **MAX IAS 185KT from VISAS**
- Track via GLS RWY 27 or ILS RWY 27 or RNP RWY 27 or LOC RWY 27

COMMUNICATIONS FAILURE: PROCEDURE IN IMC

- Squawk 7600, comply with vertical navigation requirements, but not below MSA.
- Track via the latest STAR clearance to the nominated runway, then fly the most suitable approach in accordance with ERSA EMERG Section 1.5.

Changes: VAR.

MMLSR35-178