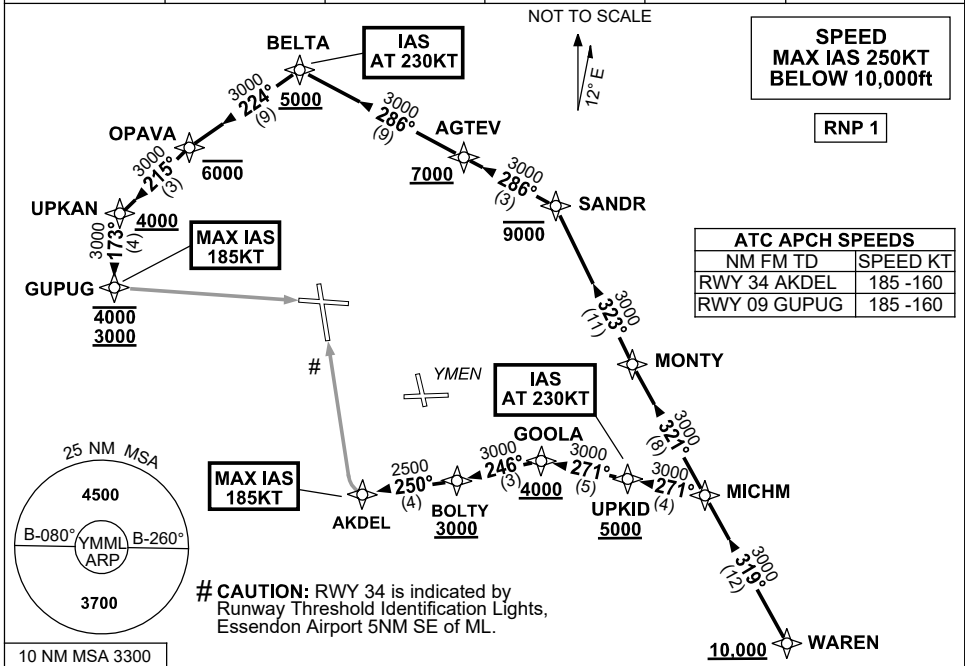


**STANDARD INSTRUMENT ARRIVAL (STAR)
WAREN EIGHT ALPHA ARRIVAL (RNAV) RWY 09/34
MELBOURNE, VIC (YMML)**

21 MAR 2024

ATIS 114.1 118.0	APP 132.0	TWR 120.5	SMC 121.7	Bearings are Magnetic Elevations in FEET AMSL
---------------------	--------------	--------------	--------------	--



ARRIVAL: WAREN EIGHT ALPHA

RWY 09:

- **Cross** WAREN AT or ABV 10,000ft
- From WAREN track 319° to MICHM
- Turn **RIGHT**, track 321° to MONTY
- Turn **RIGHT**, track 323° to SANDR
Cross SANDR AT or BLW 9000ft
- Turn **LEFT**, track 286° to AGTEV
Cross AGTEV AT or ABV 7000ft
- Track 286° to BELTA
Cross BELTA AT or ABV 5000ft
IAS AT 230KT from BELTA
- Turn **LEFT**, track 224° to OPAVA
Cross OPAVA AT or BLW 6000ft
- Turn **LEFT**, track 215° to UPKAN
Cross UPKAN AT or ABV 4000ft
- Turn **LEFT**, track 173° to GUPUG
Cross GUPUG BTN 3000ft and 4000ft
MAX IAS 185KT from GUPUG
- Track via GLS RWY 09 or RNP RWY 09

RWY 34:

- **Cross** WAREN AT or ABV 10,000ft
- From WAREN track 319° to MICHM
- Turn **LEFT**, track 271° to UPKID
Cross UPKID AT or ABV 5000ft
IAS AT 230KT from UPKID
- Track 271° to GOOLA
Cross GOOLA AT or ABV 4000ft
- Turn **LEFT**, track 246° to BOLTY
Cross BOLTY AT or ABV 3000ft
- Turn **RIGHT**, track 250° to AKDEL
MAX IAS 185KT from AKDEL
- Track via GLS RWY 34 or RNP RWY 34

COMMUNICATIONS FAILURE: PROCEDURE IN IMC

- Squawk 7600, comply with vertical navigation requirements, but not below MSA.
- Track via the latest STAR clearance to the nominated runway, then fly the most suitable approach in accordance with ERSA EMERG Section 1.5.