

**STANDARD INSTRUMENT ARRIVAL (STAR)  
LIZZI NINE ALPHA ARRIVAL (RNAV) RWY 09/34  
MELBOURNE, VIC (YMML)**

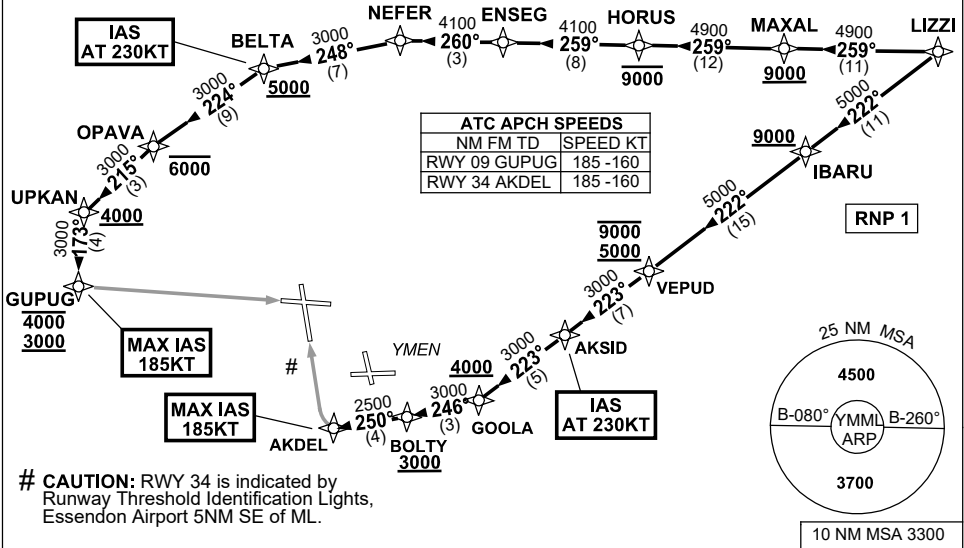
**21 MAR 2024**

ATIS 114.1 118.0	APP 132.0	TWR 120.5	SMC 121.7	Bearings are Magnetic Elevations in FEET AMSL
---------------------	--------------	--------------	--------------	--

NOT TO SCALE



**SPEED  
MAX IAS 250KT  
BELOW 10,000ft**



# **CAUTION:** RWY 34 is indicated by Runway Threshold Identification Lights, Essendon Airport 5NM SE of ML.

**ARRIVAL: LIZZI NINE ALPHA**

**RWY 09:**

- From LIZZI track 259° to MAXAL  
**Cross** MAXAL AT or ABV 9000ft
- Track 259° to HORUS  
**Cross** HORUS AT or BLW 9000ft
- Turn RIGHT, track 259° to ENSEG
- Track 260° to NEFER
- Turn LEFT, track 248° to BELTA  
**Cross** BELTA AT or ABV 5000ft  
**IAS AT 230KT** from BELTA
- Turn LEFT, track 224° to OPAVA  
**Cross** OPAVA AT or BLW 6000ft
- Turn LEFT, track 215° to UPKAN  
**Cross** UPKAN AT or ABV 4000ft
- Turn LEFT, track 173° to GUPUG  
**Cross** GUPUG BTN 3000ft and 4000ft  
**MAX IAS 185KT** from GUPUG
- Track via GLS RWY 09 or RNP RWY 09

**RWY 34:**

- From LIZZI track 222° to IBARU  
**Cross** IBARU AT or ABV 9000ft
- Track 222° to VEPUD  
**Cross** VEPUD BTN 5000ft and 9000ft
- Track 223° to AKSID  
**IAS AT 230KT** from AKSID
- Track 223° to GOOLA  
**Cross** GOOLA AT or ABV 4000ft
- Turn RIGHT, track 246° to BOLTY  
**Cross** BOLTY AT or ABV 3000ft
- Turn RIGHT, track 250° to AKDEL  
**MAX IAS 185KT** from AKDEL
- Track via GLS RWY 34 or RNP RWY 34

**COMMUNICATIONS FAILURE: PROCEDURE IN IMC**

- Squawk 7600, comply with vertical navigation requirements, but not below MSA.
- Track via the latest STAR clearance to the nominated runway, then fly the most suitable approach in accordance with ERSA EMERG Section 1.5.

Changes: VAR.

MMLSR25-178