

**STANDARD INSTRUMENT ARRIVAL (STAR)  
BOYSE EIGHT ALPHA ARRIVAL (NON-JET)(RNAV) RWY 16/27  
MELBOURNE, VIC (YMML)**

**21 MAR 2024**

ATIS 114.1 118.0	APP 132.0	TWR 120.5	SMC 121.7		Bearings are Magnetic Elevations in FEET AMSL
---------------------	--------------	--------------	--------------	--	--

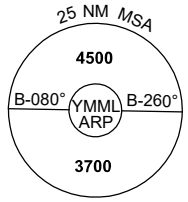
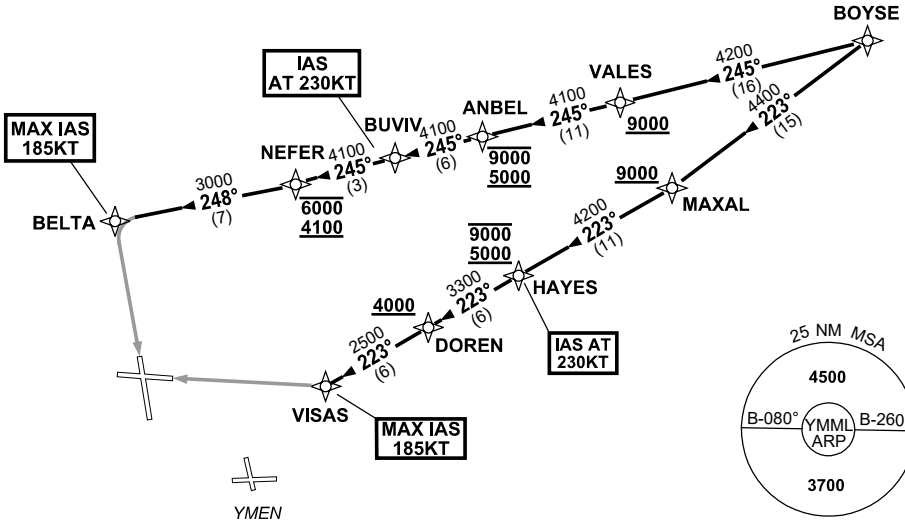
NOT TO SCALE



ATC APCH SPEEDS	
NM FM TD	SPEED KT
RWY 16 BELTA	185 -160
RWY 27 VISAS	185 -160

**SPEED  
MAX IAS 250KT  
BELOW 10,000ft**

**RNP 1**



10 NM MSA 3300

**ARRIVAL: BOYSE EIGHT ALPHA (NON-JET)**

**RWY 16:**

- From BOYSE track 245° to VALES  
**Cross** VALES AT or ABV 9000ft
- Track 245° to ANBEL  
**Cross** ANBEL BTN 5000ft and 9000ft
- Track 245° to BUVIV  
**IAS AT 230KT** from BUVIV
- Track 245° to NEFER  
**Cross** NEFER BTN 4100ft and 6000ft
- Turn RIGHT, track 248° to BELTA  
MAX IAS 185KT from BELTA
- Track via GLS RWY 16 or ILS RWY 16 or  
• RNP Z RWY 16 or LOC RWY 16

**RWY 27:**

- From BOYSE track 223° to MAXAL  
**Cross** MAXAL AT or ABV 9000ft
- Turn RIGHT, track 223° to HAYES  
**Cross** HAYES BTN 5000ft and 9000ft  
**IAS AT 230KT** from HAYES
- Track 223° to DOREN  
**Cross** DOREN AT or ABV 4000ft
- Track 223° to VISAS  
MAX IAS 185KT from VISAS
- Track via GLS RWY 27 or ILS RWY 27 or  
RNP RWY 27 or LOC RWY 27

**COMMUNICATIONS FAILURE: PROCEDURE IN IMC**

- Squawk 7600, comply with vertical navigation requirements, but not below MSA.
- Track via the latest STAR clearance to the nominated runway, then fly the most suitable approach in accordance with ERSA EMERG Section 1.5.

Changes: VAR, Editorial.

MMLSR24-178