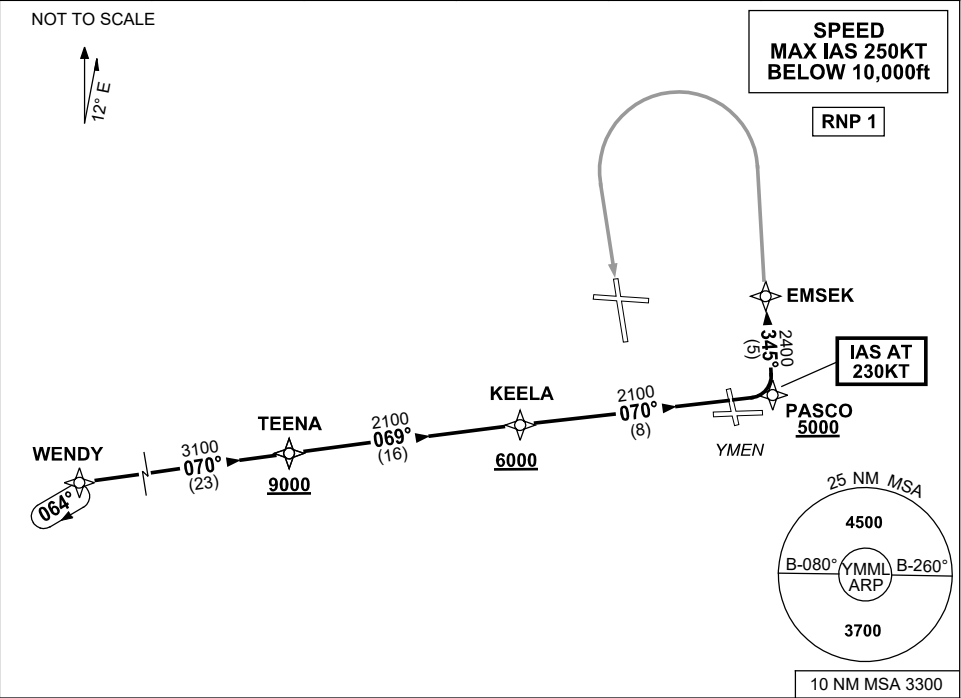


STANDARD INSTRUMENT ARRIVAL (STAR)
WENDY ONE PAPA ARRIVAL (RNAV)
MELBOURNE, VIC (YMML)

21 MAR 2024

ATIS 114.1 118.0	APP 129.4 132.0	TWR 120.5	SMC 121.7		Bearings are Magnetic Elevations in FEET AMSL
---------------------	--------------------	--------------	--------------	--	--



ARRIVAL: WENDY ONE PAPA

RWY 16 :

- From WENDY track 070° to TEENA
Cross TEENA AT or ABV 9000ft
- From TEENA turn **LEFT**, track 069° to KEELA
Cross KEELA AT or ABV 6000ft
- Track 070° to PASCO
Cross PASCO AT or ABV 5000ft
IAS AT 230KT from PASCO
- Turn **LEFT**, track 345° to EMSEK
- Track via RNP P RWY 16 (ARP)

COMMUNICATIONS FAILURE: PROCEDURE IN IMC

- Squawk 7600, comply with vertical navigation requirements, but not below MSA.
- Track via the latest STAR clearance to the nominated runway, then fly the most suitable approach in accordance with ERSA EMERG Section 1.5.

Changes: VAR.

MMLSR21-178