

**STANDARD INSTRUMENT ARRIVAL (STAR)
WENDY ONE PAPA ARRIVAL (RNAV)
MELBOURNE, VIC (YMML)**

21 MAR 2024

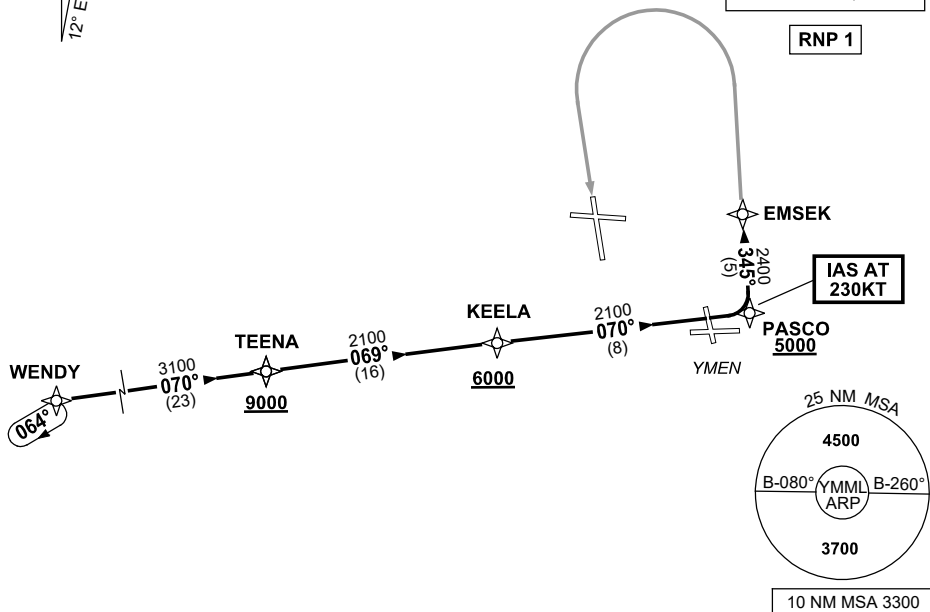
ATIS 114.1 118.0	APP 129.4 132.0	TWR 120.5	SMC 121.7		Bearings are Magnetic Elevations in FEET AMSL
---------------------	--------------------	--------------	--------------	--	--

NOT TO SCALE



**SPEED
MAX IAS 250KT
BELOW 10,000ft**

RNP 1



ARRIVAL: WENDY ONE PAPA

RWY 16 :

- From WENDY track 070° to TEENA
Cross TEENA AT or ABV 9000ft
- From TEENA turn LEFT, track 069° to KEELA
Cross KEELA AT or ABV 6000ft
- Track 070° to PASCO
Cross PASCO AT or ABV 5000ft
IAS AT 230KT from PASCO
- Turn LEFT, track 345° to EMSEK
- Track via RNP P RWY 16 (AR)

COMMUNICATIONS FAILURE: PROCEDURE IN IMC

- Squawk 7600, comply with vertical navigation requirements, but not below MSA.
- Track via the latest STAR clearance to the nominated runway, then fly the most suitable approach in accordance with ERSA EMERG Section 1.5.

Changes: VAR.

MMLSR21-178