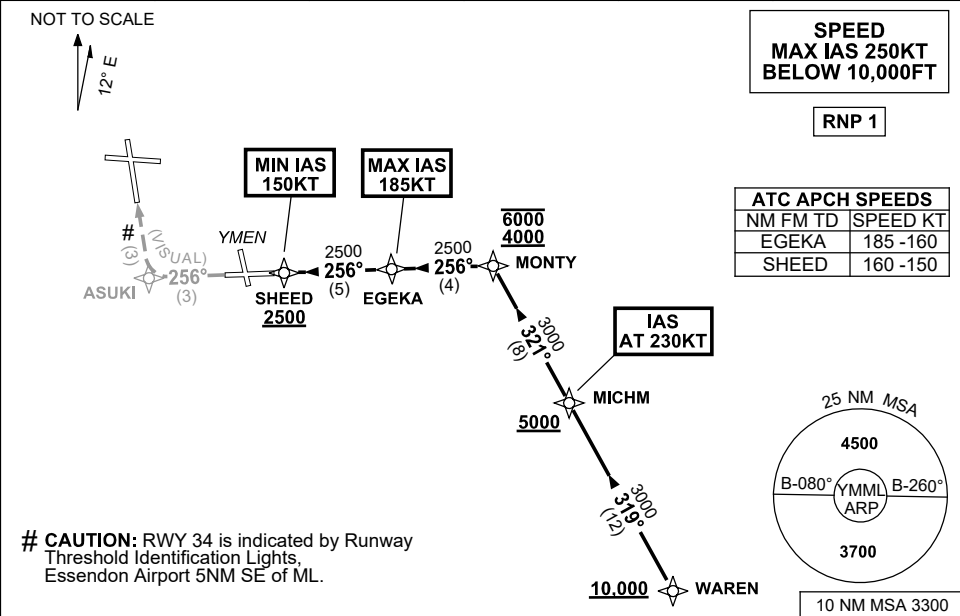


STANDARD INSTRUMENT ARRIVAL (STAR)
WAREN EIGHT VICTOR ARRIVAL (RNAV)
MELBOURNE, VIC (YMML)

21 MAR 2024

ATIS 114.1 118.0	APP 132.0	TWR 120.5	SMC 121.7		Bearings are Magnetic Elevations in FEET AMSL
---------------------	--------------	--------------	--------------	--	--



ARRIVAL: WAREN EIGHT VICTOR

RWY 34:

- Cross** WAREN AT or ABV 10,000ft
- From WAREN track 319° to MICHM
- Cross** MICHM AT or ABV 5000ft
- IAS AT 230KT** from MICHM
- Track 321° to MONTY
- Cross** MONTY BTN 4000ft and 6000ft
- Turn LEFT, track 256° to EGEKA
- MAX IAS 185KT** from EGEKA
- Track 256° to SHEED
- Cross** SHEED AT or ABV 2500ft
- MIN IAS 150KT** from SHEED
- Track 256° VISUAL to ASUKI
- Turn RIGHT for VISUAL intercept of final RWY 34

COMMUNICATIONS FAILURE: PROCEDURE IN IMC

- Squawk 7600, comply with vertical navigation requirements, but not below MSA.
- Track via the latest STAR clearance to the nominated runway, then fly the most suitable approach in accordance with ERSA EMERG Section 1.5.

Changes: VAR, Editorial.

MMLSR19-178