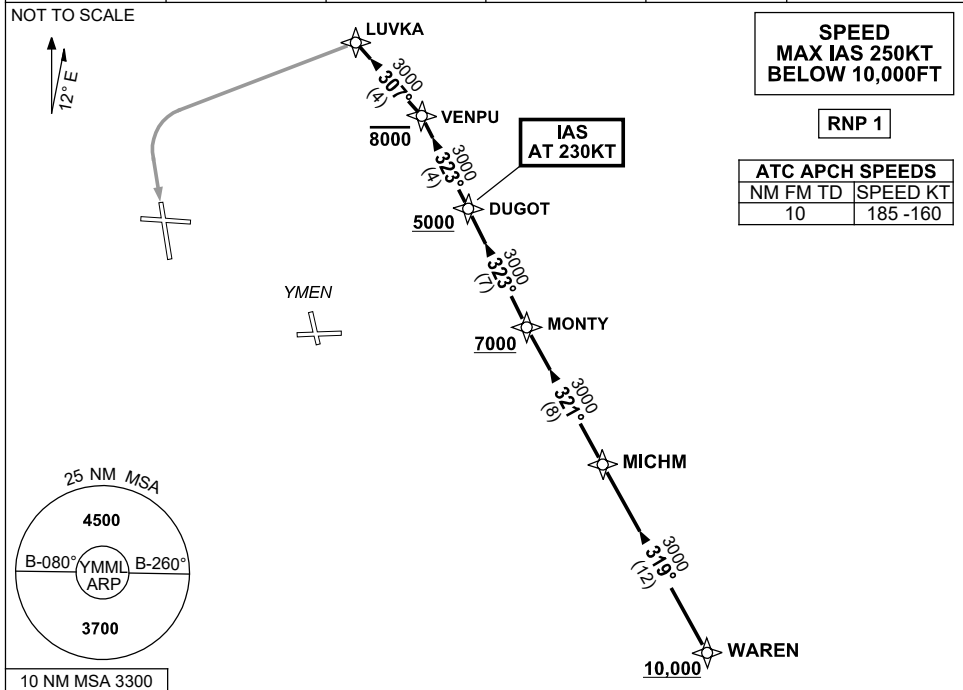


**STANDARD INSTRUMENT ARRIVAL (STAR)
WAREN EIGHT MIKE ARRIVAL (RNAV)
MELBOURNE, VIC (YMML)**

21 MAR 2024

ATIS 114.1 118.0	APP 132.0	TWR 120.5	SMC 121.7	Bearings are Magnetic. Elevations in FEET AMSL
----------------------------	---------------------	---------------------	---------------------	---



ARRIVAL: WAREN EIGHT MIKE

Cross WAREN AT or ABV 10,000ft, then:

RWY 16:

- From WAREN track 319° to MICHM
- Turn RIGHT, track 321° to MONTY
Cross MONTY AT or ABV 7000ft
- Turn RIGHT, track 323° to DUGOT
Cross DUGOT AT or ABV 5000ft
IAS AT 230KT from DUGOT
- Track 323° to VENPU
Cross VENPU AT or BLW 8000ft
- Turn LEFT, track 307° to LUVKA
- Turn LEFT, track via RNP M RWY 16 (AR)

COMMUNICATIONS FAILURE: PROCEDURE IN IMC

- Squawk 7600, comply with vertical navigation requirements, but not below MSA.
- Track via the latest STAR clearance to the nominated runway, then fly the most suitable approach in accordance with ERSA EMERG Section 1.5.

Changes: VAR, Editorial.

MMLSR13-178