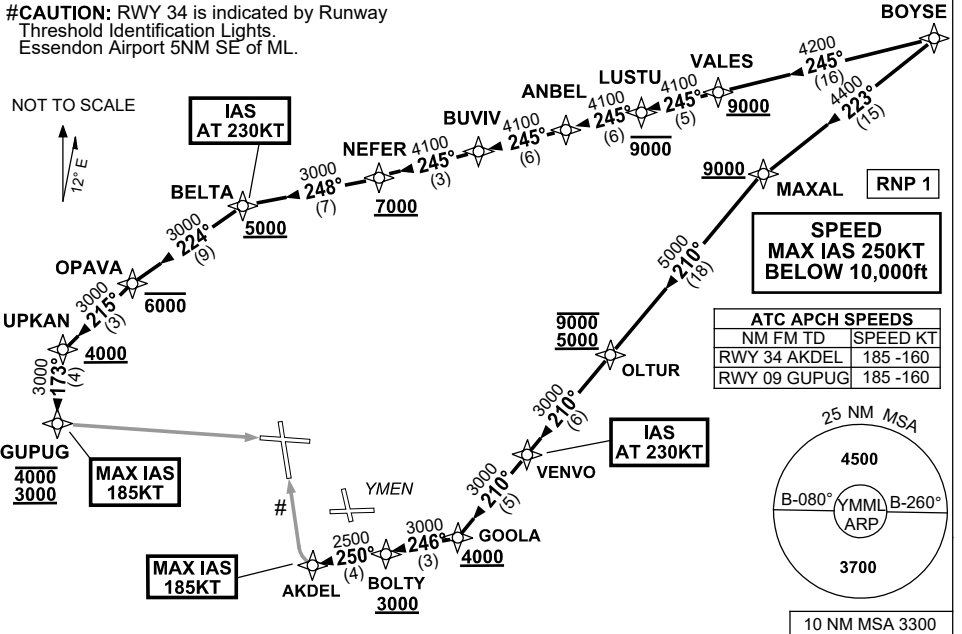


**STANDARD INSTRUMENT ARRIVAL (STAR)  
BOYSE EIGHT ALPHA ARRIVAL (NON-JET)(RNAV) RWY 09/34  
MELBOURNE, VIC (YMML)**

**21 MAR 2024**

ATIS 114.1 118.0	APP 132.0	TWR 120.5	SMC 121.7	Bearings are Magnetic Elevations in FEET AMSL
---------------------	--------------	--------------	--------------	--

#CAUTION: RWY 34 is indicated by Runway Threshold Identification Lights.  
Essendon Airport 5NM SE of ML.



**ARRIVAL: BOYSE EIGHT ALPHA (NON-JET)**

**RWY 09:**

- From BOYSE track 245° to VALES  
**Cross** VALES AT or ABV 9000ft
- Track 245° to LUSTU  
**Cross** LUSTU AT or BLW 9000ft
- Track 245° to ANBEL
- Track 245° to BUVIV
- Track 245° to NEFER  
**Cross** NEFER AT or ABV 7000ft
- Turn RIGHT, track 248° to BELTA  
**Cross** BELTA AT or ABV 5000ft  
**IAS AT 230KT** from BELTA
- Turn LEFT, track 224° to OPAVA  
**Cross** OPAVA AT or BLW 6000ft
- Turn LEFT, track 215° to UPKAN  
**Cross** UPKAN AT or ABV 4000ft
- Turn LEFT, track 173° to GUPUG  
**Cross** GUPUG BTN 3000ft and 4000ft  
**MAX IAS 185KT** from GUPUG
- Track via GLS RWY 09 or RNP RWY 09

**RWY 34:**

- From BOYSE track 223° to MAXAL  
**Cross** MAXAL AT or ABV 9000ft
- Turn LEFT, track 210° to OLTUR  
**Cross** OLTUR BTN 5000ft and 9000ft
- Track 210° to VENVO  
**IAS AT 230KT** from VENVO
- Track 210° to GOOLA  
**Cross** GOOLA AT or ABV 4000ft
- Turn RIGHT, track 246° to BOLTY  
**Cross** BOLTY AT or ABV 3000ft
- Turn RIGHT, track 250° to AKDEL  
**MAX IAS 185KT** from AKDEL
- Track via GLS RWY 34 or RNP RWY 34

**COMMUNICATIONS FAILURE: PROCEDURE IN IMC**

- Squawk 7600, comply with vertical navigation requirements, but not below MSA.
- Track via the latest STAR clearance to the nominated runway, then fly the most suitable approach in accordance with ERSA EMERG Section 1.5.

Changes: VAR.

MMLSR01-178