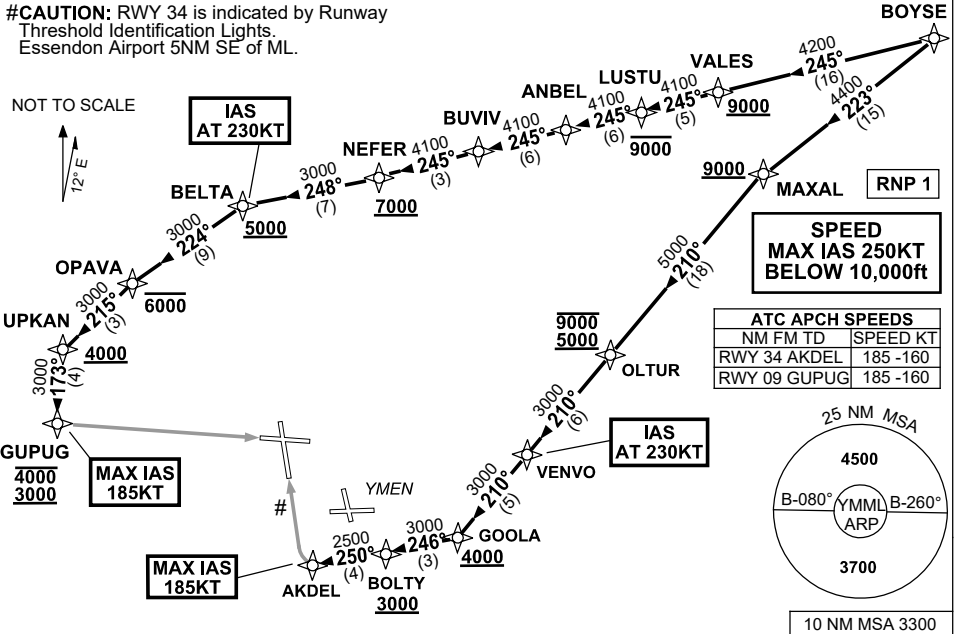


**STANDARD INSTRUMENT ARRIVAL (STAR)
BOYSE EIGHT ALPHA ARRIVAL (NON-JET)(RNAV) RWY 09/34
MELBOURNE, VIC (YMML)**

21 MAR 2024

ATIS 114.1 118.0	APP 132.0	TWR 120.5	SMC 121.7	Bearings are Magnetic Elevations in FEET AMSL
---------------------	--------------	--------------	--------------	--

#CAUTION: RWY 34 is indicated by Runway Threshold Identification Lights.
Essendon Airport 5NM SE of ML.



ARRIVAL: BOYSE EIGHT ALPHA (NON-JET)

RWY 09:

- From BOYSE track 245° to VALES
Cross VALES AT or ABV 9000ft
- Track 245° to LUSTU
Cross LUSTU AT or BLW 9000ft
- Track 245° to ANBEL
- Track 245° to BUVIV
- Track 245° to NEFER
Cross NEFER AT or ABV 7000ft
- Turn RIGHT, track 248° to BELTA
Cross BELTA AT or ABV 5000ft
IAS AT 230KT from BELTA
- Turn LEFT, track 224° to OPAVA
Cross OPAVA AT or BLW 6000ft
- Turn LEFT, track 215° to UPKAN
Cross UPKAN AT or ABV 4000ft
- Turn LEFT, track 173° to GUPUG
Cross GUPUG BTN 3000ft and 4000ft
MAX IAS 185KT from GUPUG
- Track via GLS RWY 09 or RNP RWY 09

RWY 34:

- From BOYSE track 223° to MAXAL
Cross MAXAL AT or ABV 9000ft
- Turn LEFT, track 210° to OLTUR
Cross OLTUR BTN 5000ft and 9000ft
- Track 210° to VENVO
IAS AT 230KT from VENVO
- Track 210° to GOOLA
Cross GOOLA AT or ABV 4000ft
- Turn RIGHT, track 246° to BOLTY
Cross BOLTY AT or ABV 3000ft
- Turn RIGHT, track 250° to AKDEL
MAX IAS 185KT from AKDEL
- Track via GLS RWY 34 or RNP RWY 34

COMMUNICATIONS FAILURE: PROCEDURE IN IMC

- Squawk 7600, comply with vertical navigation requirements, but not below MSA.
- Track via the latest STAR clearance to the nominated runway, then fly the most suitable approach in accordance with ERSA EMERG Section 1.5.

Changes: VAR.

MMLSR01-178