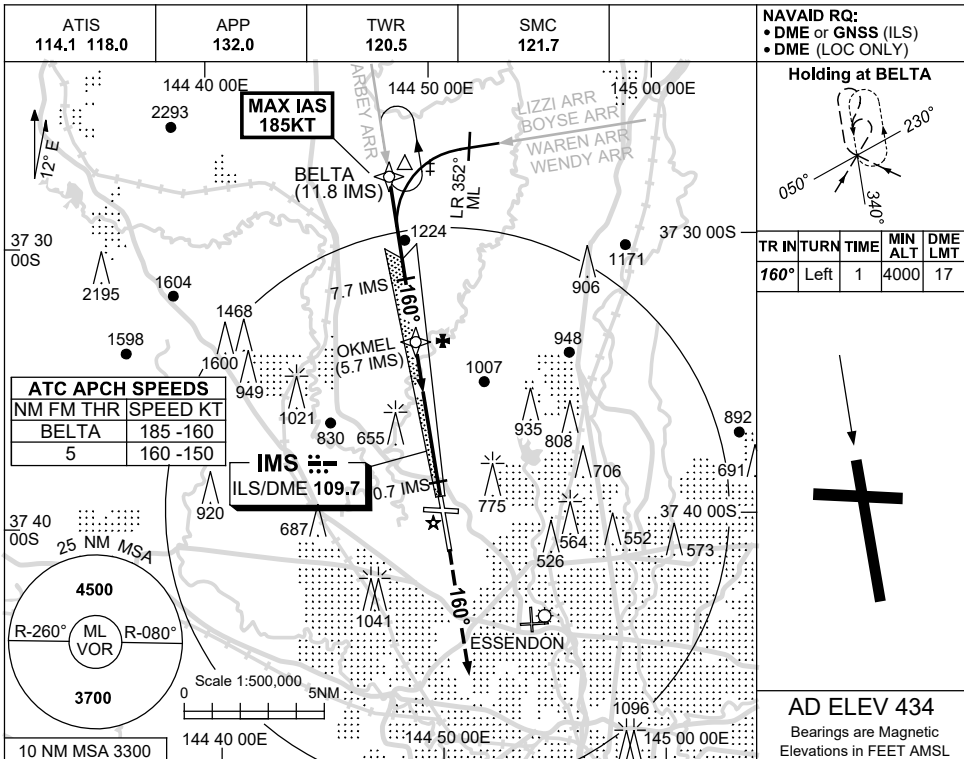
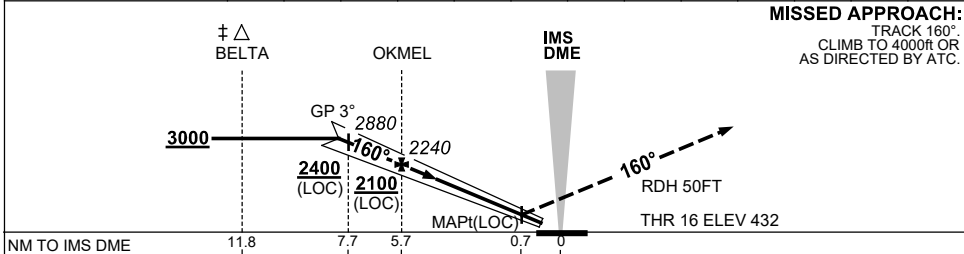


21 MAR 2024



NM TO IMS DME	8.1	7.7	7	5.7	5	4	3	2.3				
ALT (3° APCH PATH)	3000	2880	2650	2240	2010	1690	1370	1140				



NM TO IMS DME	11.8	7.7	5.7	0.7	0
NM TO THR 16	11.6	7.5	5.5	0.5	

NOTES

1. MAX IAS : BELTA : 185KT.
- * 2. SPECIAL ALT MNM 700/2.5 KM. (NOT APPLICABLE TO LOC/DME).
- ‡ 3. ACFT MAY BE RADAR VECTORED TO FNA OR JOIN PROCEDURE OFF STAR PRIOR TO FAF.

CATEGORY	A	B	C	D
S-I ILS		640 (208) 0.8	550 RVR	
S-I LOC		1140 (706-3.1)		
CIRCLING	1140 (706-2.4)		1450 (1016-4.0)	1600 (1166-5.0)
ALTERNATE‡	(1206-4.4)		(1516-6.0)	(1666-7.0)

Changes: VAR.

MMLII03-178