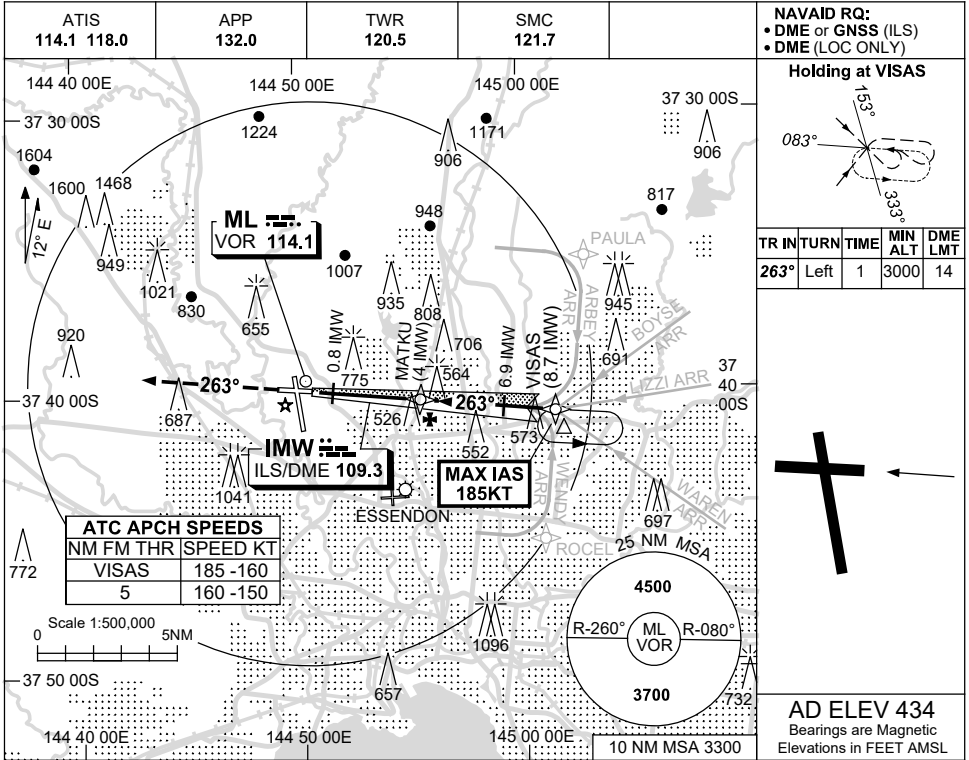


USE QNH

ILS-Z or LOC-Z RWY 27  
**MELBOURNE, VIC (YMML)**

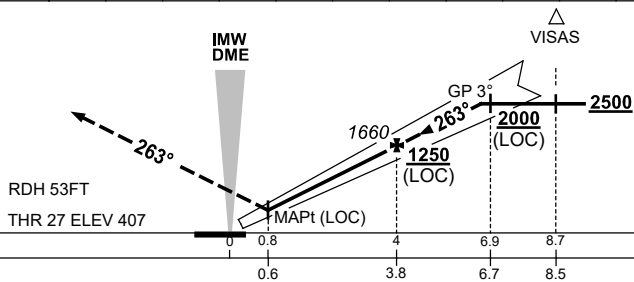
21 MAR 2024



NM TO IMW DME	1.5	2	3	4	5	6	6.6						
ALT (3° APCH PATH)	880	1040	1360	1660	1990	2310	2500						

**MISSED APPROACH:**

TRACK 263°  
 CLIMB TO 4000ft OR  
 AS DIRECTED BY ATC.



NM TO IMW DME							
NM TO THR 27	0.6	3.8	6.7	8.5			

**NOTES**

1. MAX IAS :  
 VISAS : 185KT.
2. SPECIAL ALTN MNM  
 700/2.5 KM.

CATEGORY	A	B	C	D
S-I ILS		<b>610</b> (203) 0.8		550 RVR
S-I LOC		<b>880</b> (473-1.9)		
CIRCLING	<b>1140</b> (706-2.4)		<b>1450</b> (1016-4.0)	<b>1600</b> (1166-5.0)
ALTERNATE*	(1206-4.4)		(1516-6.0)	(1666-7.0)

Changes: VAR.

MMLII02-178