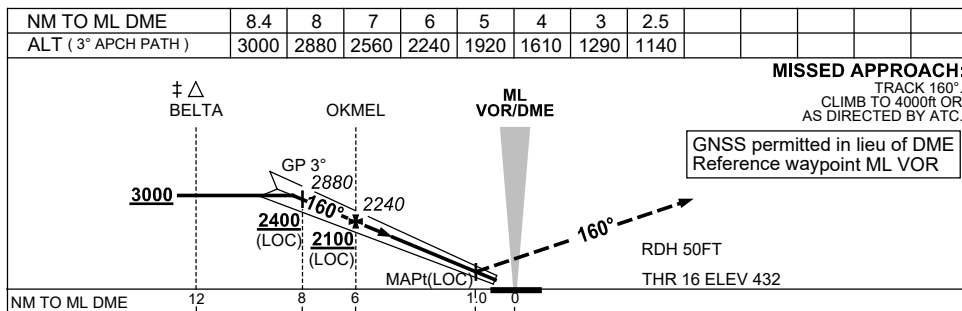
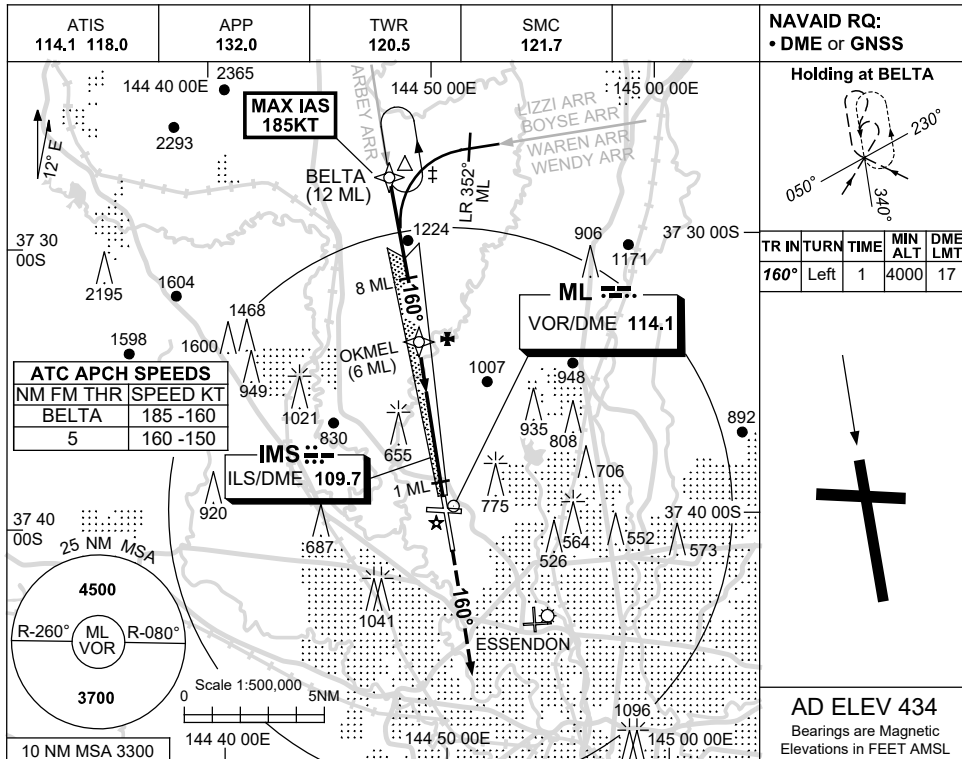


USE QNH

ILS-Y or LOC-Y RWY 16
MELBOURNE, VIC (YMML)

21 MAR 2024



MISSED APPROACH:
 TRACK 160°
 CLIMB TO 4000ft OR
 AS DIRECTED BY ATC.

GNSS permitted in lieu of DME
 Reference waypoint ML VOR

NOTES

1. MAX IAS :
 BELTA : 185KT.
- * 2. SPECIAL ALT MNM
 700/2.5 KM. (NOT APP-
 LICABLE TO LOC/DME).
- ‡ 3. ACFT MAY BE
 RADAR VECTORED
 TO FNA OR JOIN
 PROCEDURE OFF
 STAR PRIOR TO FAF.

CATEGORY	A	B	C	D
S-I ILS		640 (208) 0.8	550 RVR	
S-I LOC		1140 (706-3.1)		
CIRCLING	1140 (706-2.4)		1450 (1016-4.0)	1600 (1166-5.0)
ALTERNATE‡	(1206-4.4)		(1516-6.0)	(1666-7.0)

Changes: VAR.

MMLII01-178