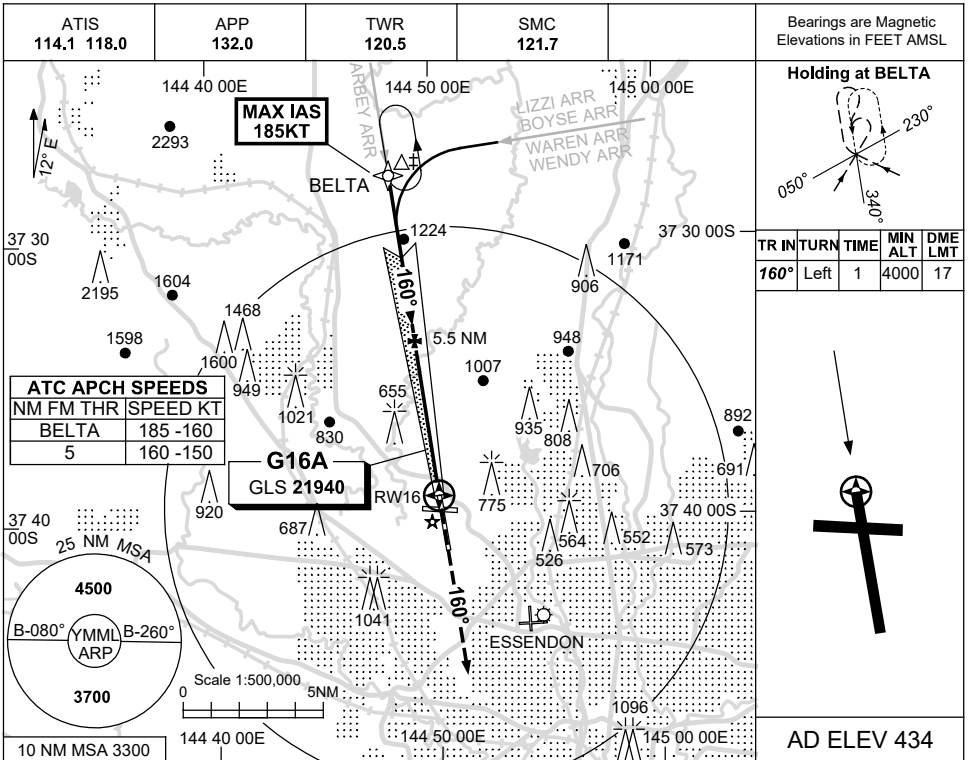


USE QNH

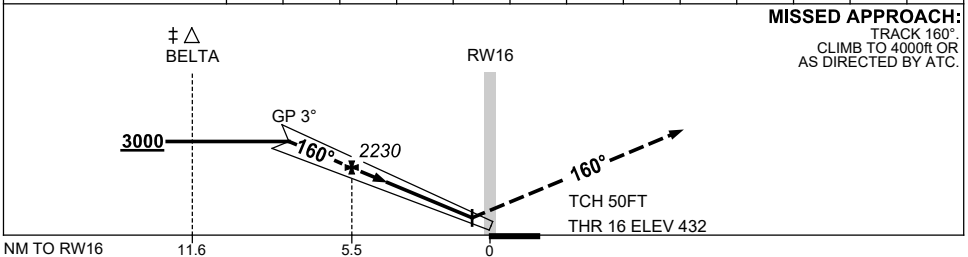
GLS RWY 16

21 MAR 2024

MELBOURNE, VIC (YMML)



NM TO RW16	7.9	7	6	5	4	3	2	1	0.5			
ALT (3° APCH PATH)	3000	2710	2390	2070	1760	1440	1120	800	640			



**NOTES**

CATEGORY	A	B	C	D
S-I GLS	<b>640 (208) 0.8 550 RVR</b>			
CIRCLING	<b>1140 (706-2.4)</b>		<b>1450 (1016-4.0) 1600 (1166-5.0)</b>	
ALTERNATE	(1206-4.4)		(1516-6.0) (1666-7.0)	

1. MAX IAS :  
BELTA : 185KT.
- ± 2. ACFT MAY BE  
RADAR VECTORED  
TO FNA OR JOIN  
PROCEDURE OFF  
STAR PRIOR TO  
FAF.

Changes: VAR.

MMLGL05-178