

STANDARD INSTRUMENT DEPARTURES (SID)  
CORRS NINE (JET)(RNAV)  
**MELBOURNE, VIC (YMML)**

21 MAR 2024

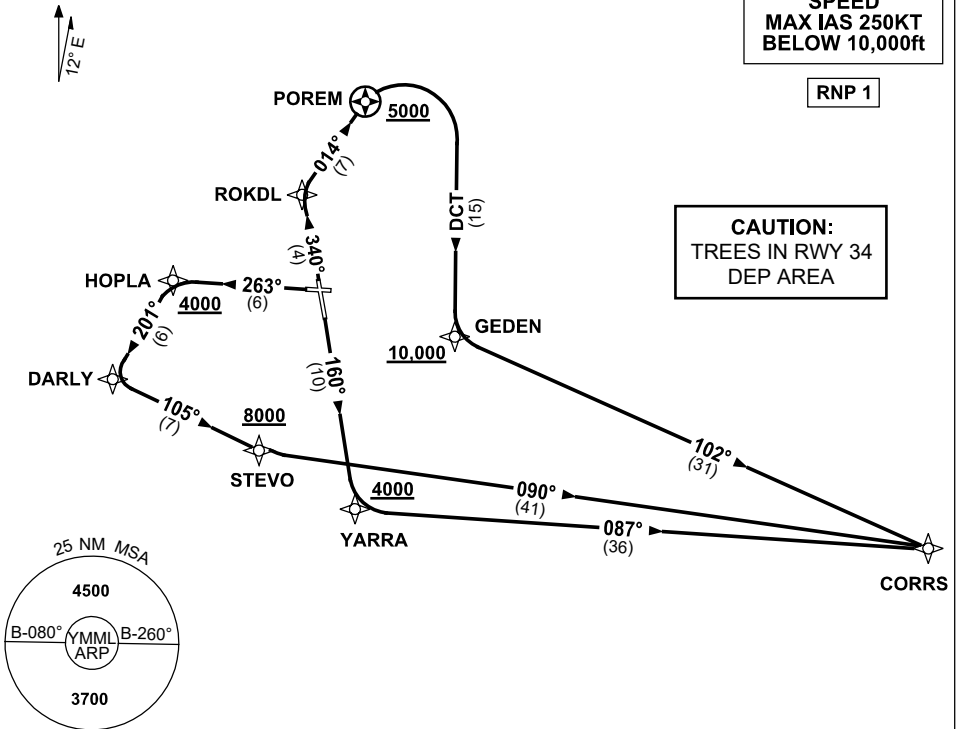
ATIS 114.1 118.0	ACD 127.2	SMC 121.7	TWR 120.5	DEP RWY 16 & 27 129.4 RWY 34 118.9
---------------------	--------------	--------------	--------------	--

NOT TO SCALE

**SPEED**  
MAX IAS 250KT  
BELOW 10,000ft

RNP 1

**CAUTION:**  
TREES IN RWY 34  
DEP AREA



10 NM MSA 3300

**CORRS NINE DEPARTURE (RNAV)**

**RWY 16**

- GRAD 3.3%
- Track 160° to YARRA  
**Cross YARRA** AT or ABV 4000ft  
(RQ GRAD TO YARRA: 6.5%)
- Turn LEFT, track 087° to CORRS,  
then as cleared

**RWY 27**

- GRAD 3.3%
- Track 263° to HOPLA  
**Cross HOPLA** AT or ABV 4000ft  
(RQ GRAD TO HOPLA: 9.9%)
- Turn LEFT, track 201° to DARLY
- Turn LEFT, track 105° to STEVO  
**Cross STEVO** AT or ABV 8000ft  
(RQ GRAD TO STEVO: 5.3%)
- Turn LEFT, track 090° to CORRS,  
then as cleared

**RWY 34**

- GRAD 4.6% to 1500ft then 3.3%
- Track 340° to ROKDL
- Turn RIGHT track 014° to POREM  
**Cross POREM** AT or ABV 5000ft  
(RQ GRAD TO POREM: 7.1%)
- Turn RIGHT track DCT to GEDEN  
**Cross GEDEN** AT or ABV 10,000ft  
(RQ GRAD TO GEDEN: 6.2%)
- Turn LEFT, track 102° to CORRS,  
then as cleared

Changes: VAR, Editorial.

MMLDP11-178