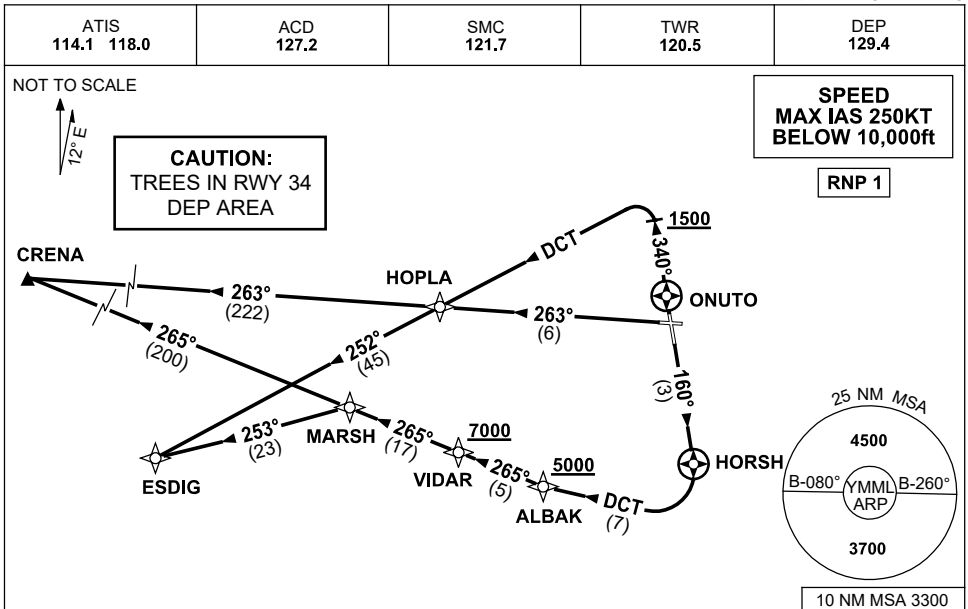


STANDARD INSTRUMENT DEPARTURES (SID)
CRENA TWO, ESDIG FOUR (JET)(RNAV)
MELBOURNE, VIC (YMML)

5 SEP 2024



CRENA TWO DEPARTURE
ESDIG FOUR DEPARTURE

RWY 16

- GRAD 3.3%
- Track 160° to HORSH
- At HORSH turn RIGHT
- Track DCT to ALBAK
Cross ALBAK AT or ABV 5000ft
(RQ GRAD TO ALBAK 8.5%)
- Track 265° to VIDAR
Cross VIDAR AT or ABV 7000ft
(RQ GRAD TO VIDAR 6.6%)
- Track 265° to MARSH

FOR ESDIG

- From MARSH turn LEFT,
- Track 253° to ESDIG, thence as cleared

FOR CRENA

- Track 265° to CRENA, thence as cleared

RWY 27

- GRAD 3.3%
- Track 263° to HOPLA

FOR ESDIG

- From HOPLA turn LEFT
- Track 252° to ESDIG, thence as cleared

FOR CRENA

- From HOPLA track 263° to CRENA,
thence as cleared

RWY 34

- GRAD 3.5% to 1200ft then 3.3%
- Track 340°
- AT or ABV 1500ft but not before ONUTO
turn LEFT, track DCT to HOPLA

FOR ESDIG

- From HOPLA track 252° to ESDIG,
thence as cleared

FOR CRENA

- From HOPLA turn RIGHT track 263° to
CRENA, thence as cleared

Changes: CHART TITLE, Editorial.

MMLDP07-180