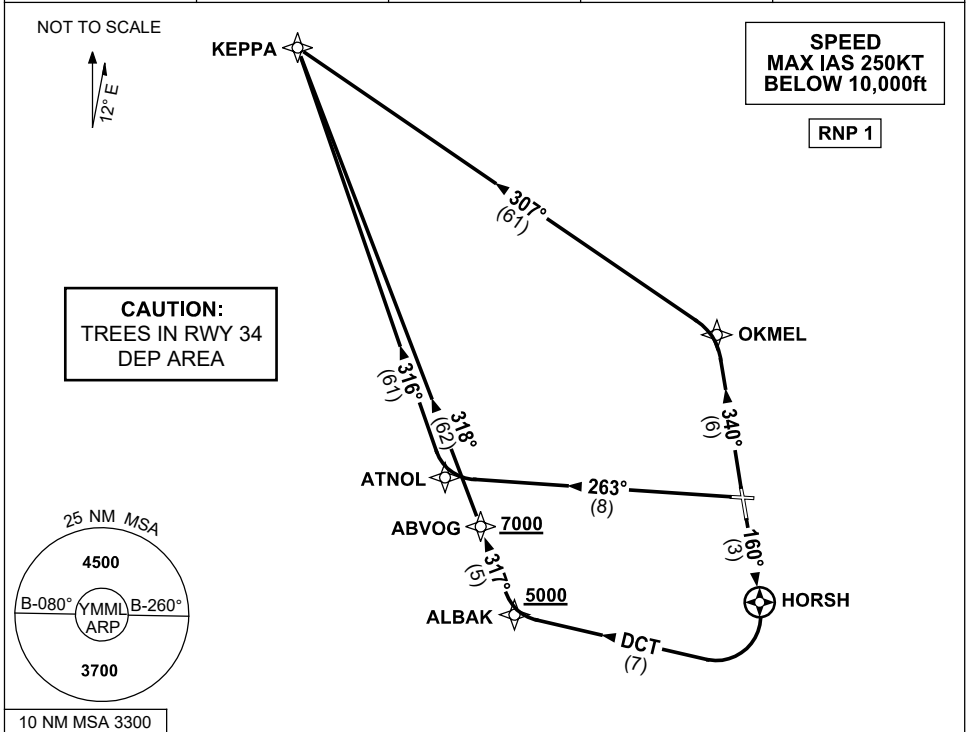


STANDARD INSTRUMENT DEPARTURES (SID)  
KEPPA TWO (JET) (RNAV)  
MELBOURNE, VIC (YMML)

21 MAR 2024

ATIS 114.1 118.0	ACD 127.2	SMC 121.7	TWR 120.5	DEP 118.9
---------------------	--------------	--------------	--------------	--------------



**KEPPA TWO DEPARTURE**

**RWY 16**

- GRAD 3.3%
- Track 160° to HORSH
- At HORSH turn RIGHT
- Track DCT to ALBAK
- **Cross** ALBAK AT or ABV 5000ft  
(RQ GRAD TO ALBAK 8.5%)
- Turn RIGHT, track 317° to ABVOG
- **Cross** ABVOG AT or ABV 7000ft  
(RQ GRAD TO ABVOG 7.4%)
- Turn RIGHT, track 318° to KEPPA,  
then as cleared

**RWY 27**

- GRAD 3.3%
- Track 263° to ATNOL
- Turn RIGHT, track 316° to KEPPA,  
then as cleared

**RWY 34**

- GRAD 3.5% to 1200ft then 3.3%
- Track 340° to OKMEL
- Turn LEFT, track 307° to KEPPA,  
then as cleared

Changes: VAR, Editorial.

MMLDP04-178