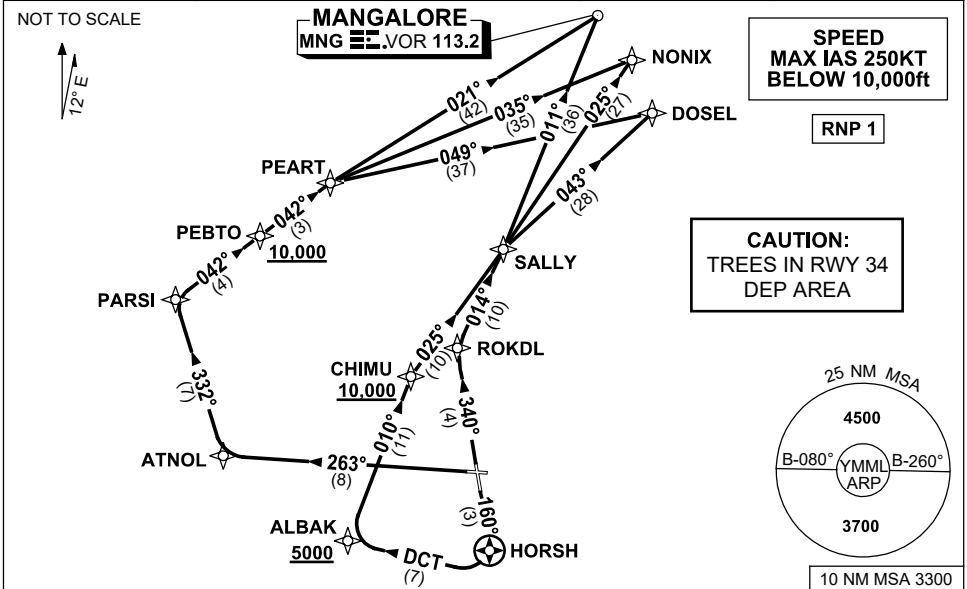


STANDARD INSTRUMENT DEPARTURES (SID)  
RWYS NORTH EAST (JET) (RNAV)  
MELBOURNE, VIC (YMML)

21 MAR 2024

ATIS 114.1 118.0	ACD 127.2	SMC 121.7	TWR 120.5	DEP 118.9
---------------------	--------------	--------------	--------------	--------------



MANGALORE (MNG)	THREE	DEPARTURE
NONIX	THREE	DEPARTURE
DOSEL	ONE	DEPARTURE
<b>RWY 16</b>		
<ul style="list-style-type: none"> <li>GRAD 3.3%</li> <li>Track 160° to HORSH</li> <li>At HORSH turn RIGHT, track DCT to ALBAK <b>Cross</b> ALBAK AT or ABV 5000ft (RQ GRAD TO ALBAK: 8.5%)</li> <li>Turn RIGHT, track 010° to CHIMU <b>Cross</b> CHIMU AT or ABV 10,000ft (RQ GRAD TO CHIMU: 7.8%)</li> <li>Turn RIGHT, track 025° to SALLY</li> </ul>		
<b>FOR MNG</b>		
<ul style="list-style-type: none"> <li>Turn LEFT, track 011° to MNG VOR, then as cleared</li> </ul>		
<b>FOR NONIX</b>		
<ul style="list-style-type: none"> <li>Track 025° to NONIX, then as cleared</li> </ul>		
<b>FOR DOSEL</b>		
<ul style="list-style-type: none"> <li>Turn RIGHT, track 043° to DOSEL, then as cleared</li> </ul>		
<b>RWY 27</b>		
<ul style="list-style-type: none"> <li>GRAD 3.3%</li> <li>Track 263° to ATNOL</li> <li>Turn RIGHT, track 332° to PARS</li> <li>Turn RIGHT, track 042° to PEBTO <b>Cross</b> PEBTO AT or ABV 10,000ft (RQ GRAD TO PEBTO: 8.5%)</li> <li>Track 042° to PEART</li> </ul>		
<b>FOR MNG</b>		
<ul style="list-style-type: none"> <li>Turn LEFT, track 021° to MNG VOR, then as cleared</li> </ul>		
<b>FOR NONIX</b>		
<ul style="list-style-type: none"> <li>Turn LEFT, track 035° to NONIX, then as cleared</li> </ul>		
<b>FOR DOSEL</b>		
<ul style="list-style-type: none"> <li>Turn RIGHT, track 049° to DOSEL, then as cleared</li> </ul>		
<b>RWY 34</b>		
<ul style="list-style-type: none"> <li>GRAD 4.6% to 1500ft then 3.3%</li> <li>Track 340° to ROKDL</li> <li>Turn RIGHT, track 014° to SALLY</li> </ul>		
<b>FOR MNG</b>		
<ul style="list-style-type: none"> <li>Track 011° to MNG VOR, then as cleared</li> </ul>		
<b>FOR NONIX</b>		
<ul style="list-style-type: none"> <li>Track 025° to NONIX, then as cleared</li> </ul>		
<b>FOR DOSEL</b>		
<ul style="list-style-type: none"> <li>Track 043° to DOSEL, then as cleared</li> </ul>		

Changes: VAR, Editorial.

MMLDP02-178