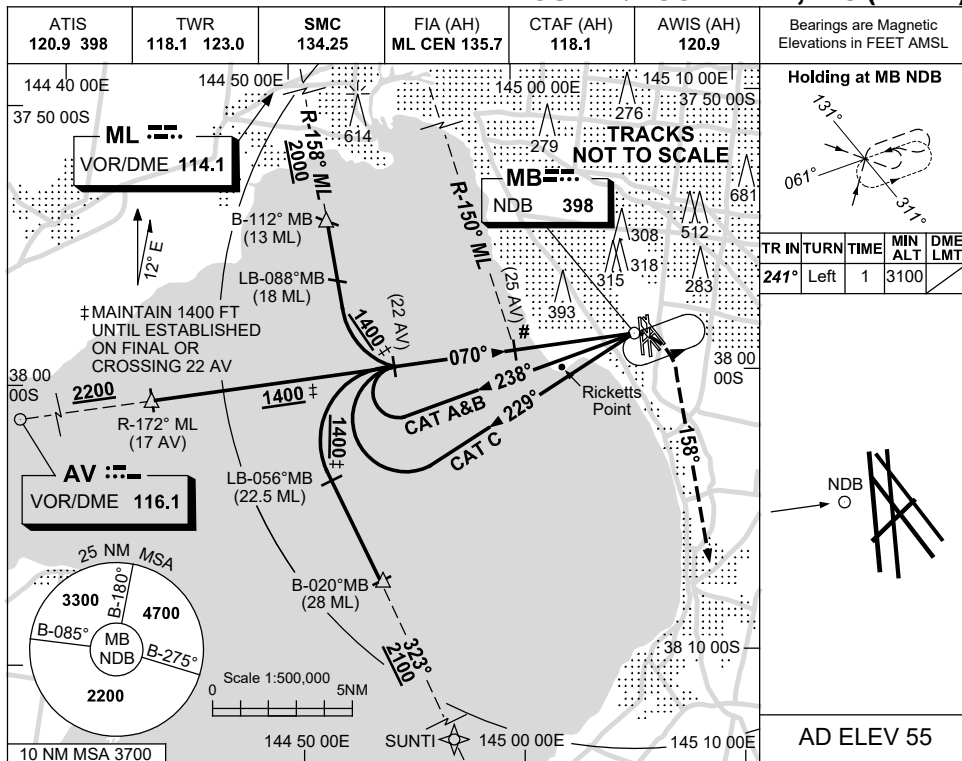


USE QNH

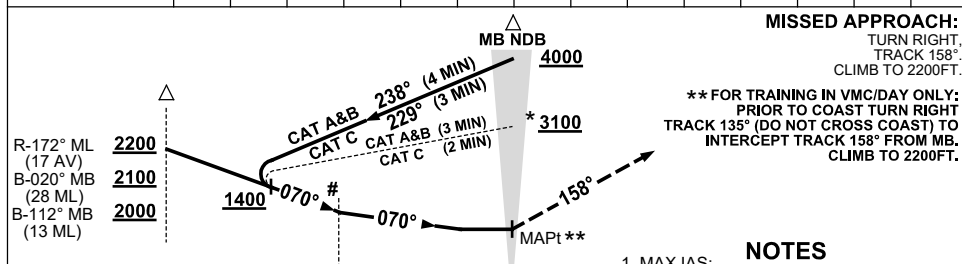
NDB-A

15 JUN 2023

MELBOURNE/MOORABBIN, VIC (YMMB)



DME DIST	NOT APPLICABLE				
ALT					



NM TO MB NDB	5	0
NM FM AV DME	25	

CATEGORY	A	B	C
CIRCLING	720 (665-2.4)		1010 (955-4.0)
ALTERNATE	(1165-4.4)		(1455-6.0)

- NOTES**
- MAX IAS:  
INITIAL : CAT A&B 140KT.  
CAT C 180KT.
  - ALTERNATIVE PROC REQUIRES ATC APV.
  - IN VMC, ALL ACFT MUST BE BLW 800FT AS SOON AS POSSIBLE. (VOR or DME EQUIPPED ACFT BY R-150° ML or 25 DME AV).
  - NAP - IF VISUAL BLW 1000FT BEFORE CROSSING COAST & LDG YMMB, TR S OF RICKETTS POINT TO JOIN CCT.
  - AV - MB TRACK CONFLICTS WITH YMPC RNP RWY 35 NEAR 17AV.

Changes: REMOVE PLUME SYMBOL.

MMBNB01-175