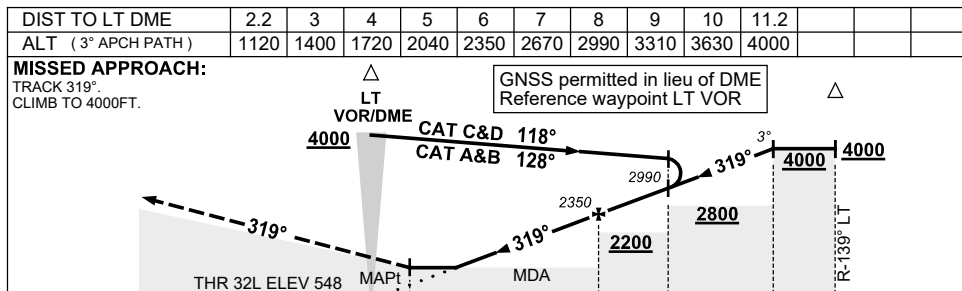
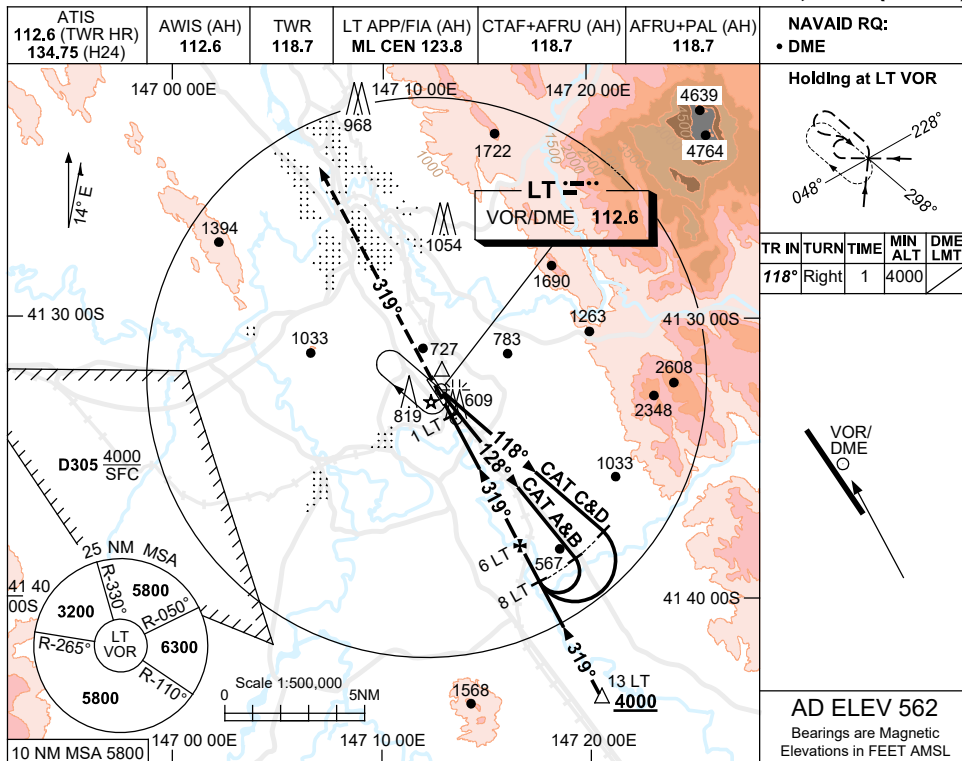


USE QNH

VOR RWY 32L

LAUNCESTON, TAS (YMLT)

1 DEC 2022



NOTES

1. MAX IAS:
BASE TURN: 210KT.
- ‡2. SPECIAL ALTN MNM 1000/5.0KM.
3. HLDG & REVERSAL NOT CONTAINED IN CTA.
4. **COLOUR:** SEE SPEC NOTICES.

CATEGORY	A	B	C	D
S-I VOR/DME	1120 (572-2.3)			
CIRCLING	1440 (878-2.4)		1670(1108-4.0) 1670(1108-5.0)	
ALTERNATE‡	(1378-4.4)		(1608-6.0) (1608-7.0)	

Changes: FROM SUP H37/22.

MLTVO02-173