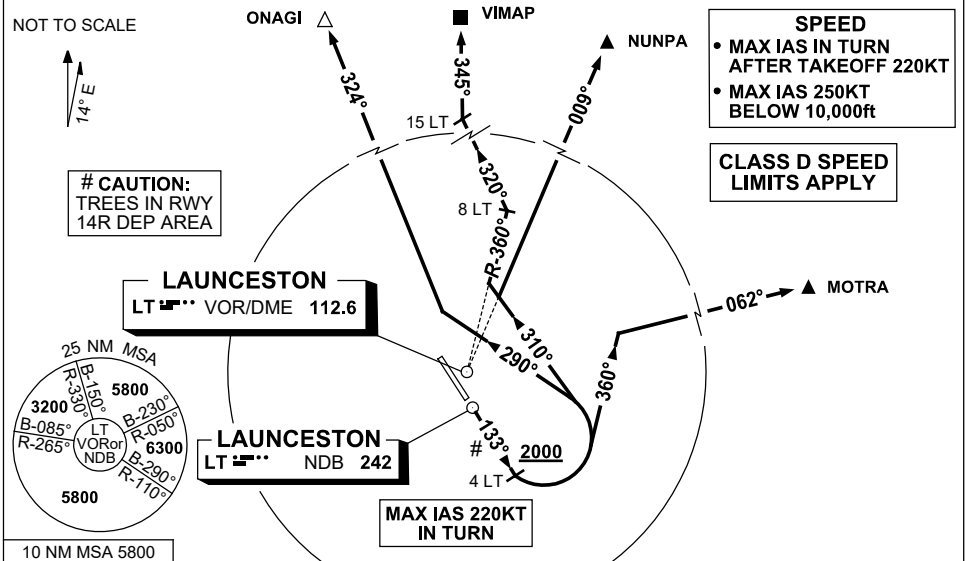


**STANDARD INSTRUMENT DEPARTURES (SID)
RWY 14R NORTH BRAVO
LAUNCESTON TAS (YMLT)**

30 NOV 2023

ATIS 112.6 (TWR HR) 134.75 (H24)	AWIS (AH) 112.6	TWR 118.7	LT APP/FIA (AH) ML CEN 123.8	CTAF+AFRU (AH) 118.7	AFRU+PAL (AH) 118.7	Bearings are Magnetic Elevations in FEET AMSL
--	--------------------	--------------	---------------------------------	-------------------------	------------------------	--



NUNPA	TWO	BRAVO	DEPARTURE
VIMAP	ONE	BRAVO	DEPARTURE
MOTRA	TWO	BRAVO	DEPARTURE
ONAGI	TWO	BRAVO	DEPARTURE

RWY 14R

- GRAD 4.6% to 6300ft then 3.3%
 - Track 133°
- (MAX IAS 220KT IN TURN)**

FOR MOTRA

- AT or ABV 2000ft, but not before 4 DME LT, turn LEFT, track 360°
- Intercept route as cleared

FOR NUNPA

- AT or ABV 2000ft, but not before 4 DME LT, turn LEFT, track 310°
- Intercept route as cleared

FOR VIMAP

- AT or ABV 2000ft, but not before 4 DME LT, turn LEFT, track 310°
- Intercept LT R-360°
- AT 8 DME LT, turn LEFT, track 320°
- Intercept route as cleared by 15 DME LT

FOR ONAGI

- AT or ABV 2000ft, but not before 4 DME LT, turn LEFT, track 290°
- Intercept route as cleared

Changes: VIMAP REPLACES NOLAN, FROM SUP H40/23.

MLTDP05-117