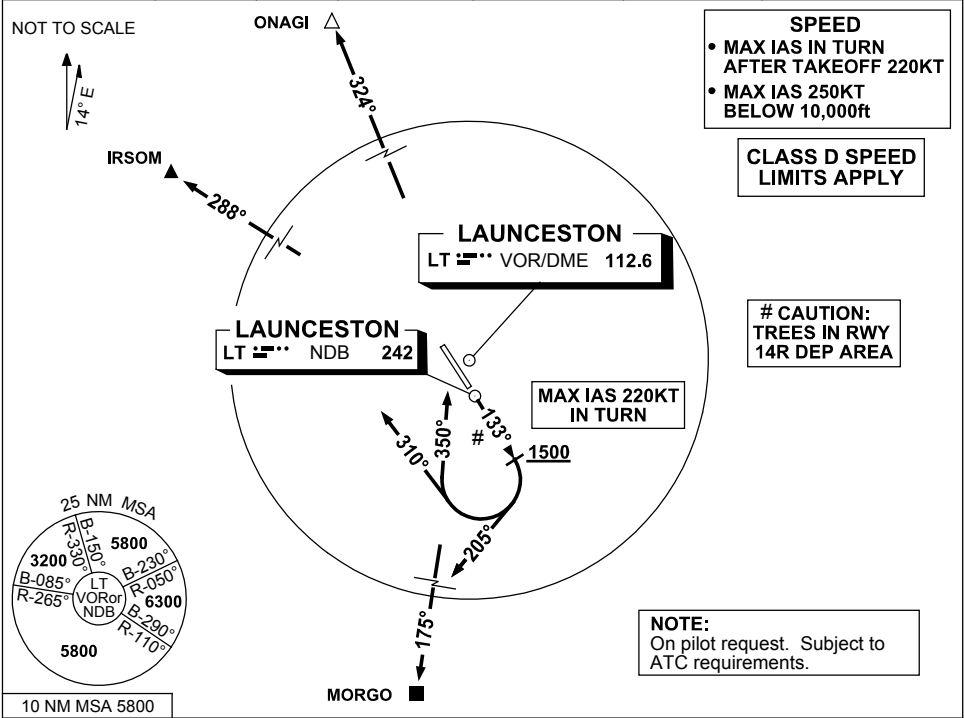


**STANDARD INSTRUMENT DEPARTURES (SID)
RWY 14R CHARLIE (NON-JET)
LAUNCESTON TAS (YMLT)**

30 NOV 2023

ATIS 112.6 (TWR HR) 134.75 (H24)	AWIS (AH) 112.6	TWR 118.7	LT APP/FIA (AH) ML CEN 123.8	CTAF+AFRU (AH) 118.7	AFRU+PAL (AH) 118.7	Bearings are Magnetic Elevations in FEET AMSL
--	--------------------	--------------	---------------------------------	-------------------------	------------------------	--



IR SOM	TWO	CHARLIE	DEPARTURE	MORG0	TWO	CHARLIE	DEPARTURE
ONAGI	TWO	CHARLIE	DEPARTURE				

RWY 14R

- Track 133°
- (MAX IAS 220KT IN TURN)**

FOR IRSOM

- GRAD 3.3%
- AT or ABV 1500ft turn RIGHT track 310°
- Intercept route as cleared

FOR ONAGI

- GRAD 3.3%
- AT or ABV 1500ft turn RIGHT track 350°
- Intercept route as cleared by 5 DME North of LT

FOR MORG0

- GRAD 4% TO 2100ft then 3.3%
- AT OR ABV 1500ft turn RIGHT track 205°
- Track 205°
- Intercept route as cleared

Changes: FROM SUP H40/23.

MLTDP03-177