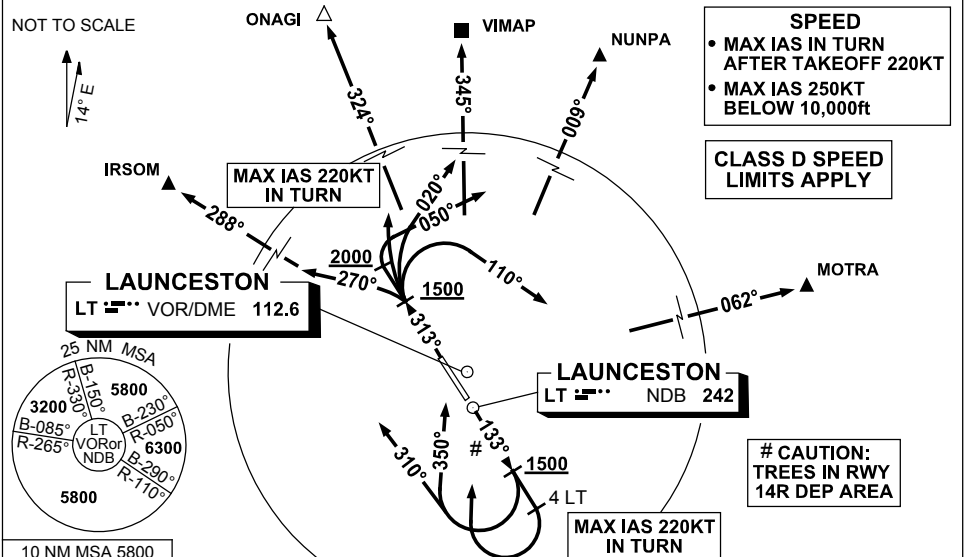


**STANDARD INSTRUMENT DEPARTURES (SID)
RWY 14R/32L NORTH ALPHA
LAUNCESTON TAS (YMLT)**

30 NOV 2023

ATIS 112.6 (TWR HR) 134.75 (H24)	AWIS (AH) 112.6	TWR 118.7	LT APP/FIA (AH) ML CEN 123.8	CTAF+AFRU (AH) 118.7	AFRU+PAL (AH) 118.7	Bearings are Magnetic Elevations in FEET AMSL
--	--------------------	--------------	---------------------------------	-------------------------	------------------------	--



<p>IR SOM TWO ALPHA DEPARTURE</p> <p>NUN PA TWO ALPHA DEPARTURE</p> <p>VIM AP ONE ALPHA DEPARTURE</p> <p>RWY 14R</p> <ul style="list-style-type: none"> • GRAD 4.6% to 6300ft, then 3.3% • Track 133° <p>(MAX IAS 220KT IN TURN)</p> <p>FOR IR SOM</p> <ul style="list-style-type: none"> • AT OR ABV 1500ft turn RIGHT track 310° • Intercept route as cleared <p>FOR ONAGI</p> <ul style="list-style-type: none"> • AT OR ABV 1500ft turn RIGHT track 350° • Intercept route as cleared by 5 DME North of LT <p>FOR NUNPA, MOTRA and VIMAP</p> <ul style="list-style-type: none"> • At 4 DME LT turn RIGHT track DCT to LT VOR or LT NDB • After passing LT VOR or NDB intercept route as cleared 	<p>MOTRA TWO ALPHA DEPARTURE</p> <p>ONAGI TWO ALPHA DEPARTURE</p> <p>RWY 32L</p> <ul style="list-style-type: none"> • Track 133° <p>(MAX IAS 220KT IN TURN)</p> <p>FOR IR SOM</p> <ul style="list-style-type: none"> • GRAD 3.3% • AT OR ABV 1500ft turn LEFT track 270° • Intercept route as cleared <p>FOR ONAGI</p> <ul style="list-style-type: none"> • GRAD 3.6% to 1500ft then 3.3% • AT OR ABV 1500ft turn RIGHT • Intercept route as cleared <p>FOR VIMAP</p> <ul style="list-style-type: none"> • GRAD 4.3% to 3500ft then 3.3% • AT OR ABV 1500ft turn RIGHT track 020° • Intercept route as cleared <p>FOR NUNPA</p> <ul style="list-style-type: none"> • GRAD 4.6% to 5000ft then 3.3% • AT OR ABV 2000ft turn RIGHT track 050° • Intercept route as cleared <p>FOR MOTRA</p> <ul style="list-style-type: none"> • GRAD 4.3% to 5600ft then 3.3% • AT OR ABV 1500ft turn RIGHT track 110° • Intercept route as cleared
---	---

Changes: VIMAP REPLACES NOLAN, FROM SUP H40/23.

MLTDP01-177