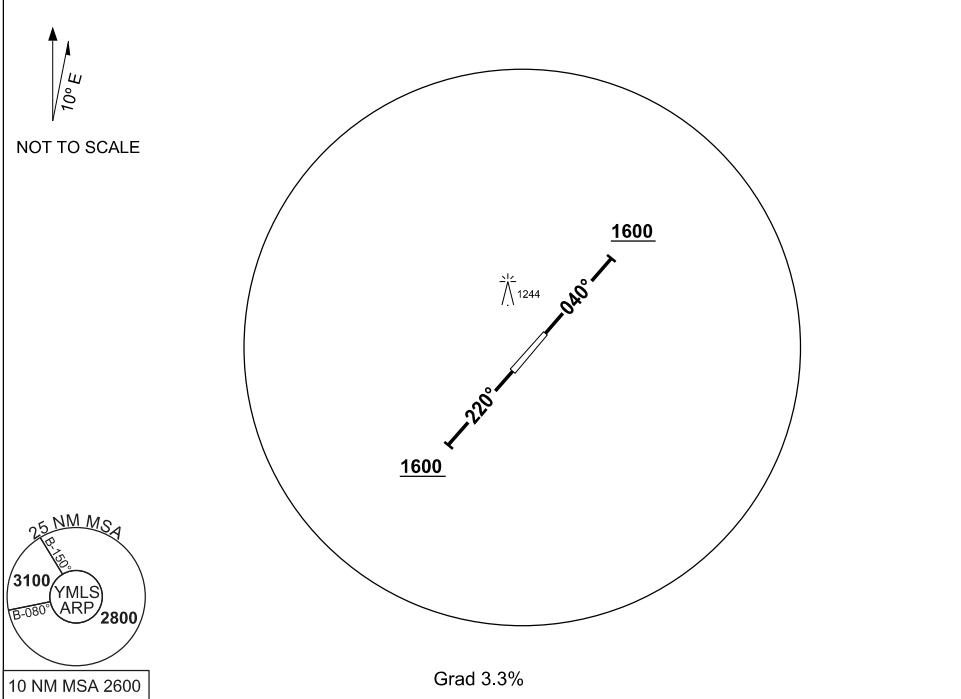


**STANDARD INSTRUMENT DEPARTURE (SID)
MILES ONE DEPARTURE
MILES, QLD (YMLS)**

23 MAR 2023

FIA BN CEN 123.95	CTAF+AFRU 126.35	AFRU+PAL 126.35			Bearings are Magnetic Elevations in FEET AMSL
-----------------------------	----------------------------	---------------------------	--	--	--



MILES ONE DEPARTURE

RWY 04

- Track 040°
- At or above 1600FT turn as required
- Intercept flight plan route

RWY 22

- Track 220°
- At or above 1600FT turn as required
- Intercept flight plan route

NOTES

- NIL -

Changes: 25NM MSA.

MLSDP01-174