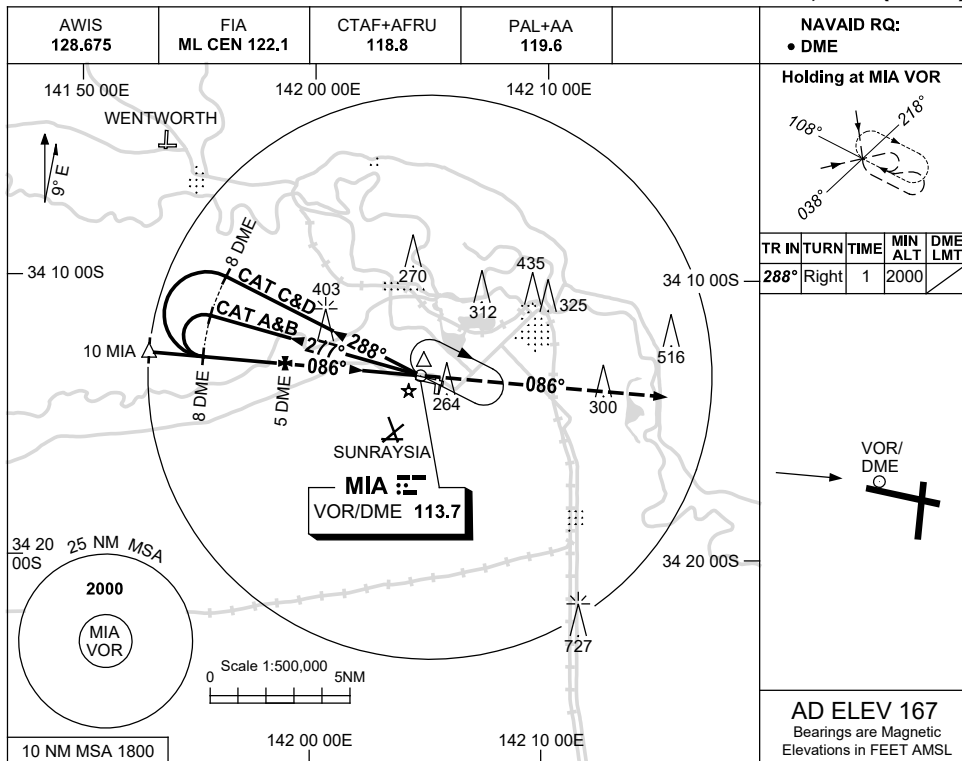


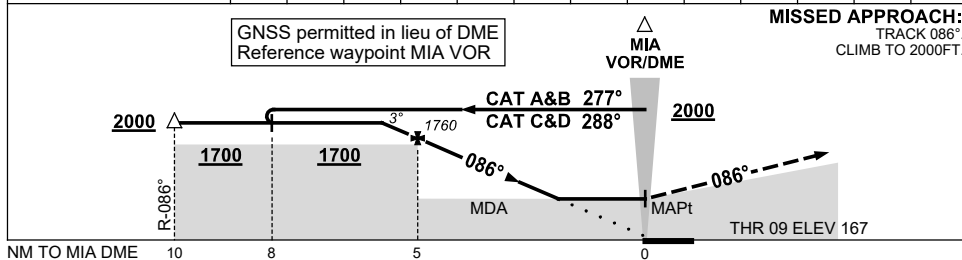
USE QNH

VOR-Z RWY 09
MILDURA, VIC (YMIA)

23 MAR 2023



DIST TO MIA DME	5.8	5	4	3	2	1.8							
ALT (3° APCH PATH)	2000	1760	1440	1120	800	730							



CATEGORY	A	B	C	D
S-I VOR/DME	730 (563-3.2)			
CIRCLING	840 (673-2.4)	900 (733-4.0)	980 (813-5.0)	
ALTERNATE	(1173-4.4)	(1233-6.0)	(1313-7.0)	

NOTES

1. MAX IAS:
INITIAL : 210Kt.

Changes: SUNRAYSIA ALA.

MIAVO01-174