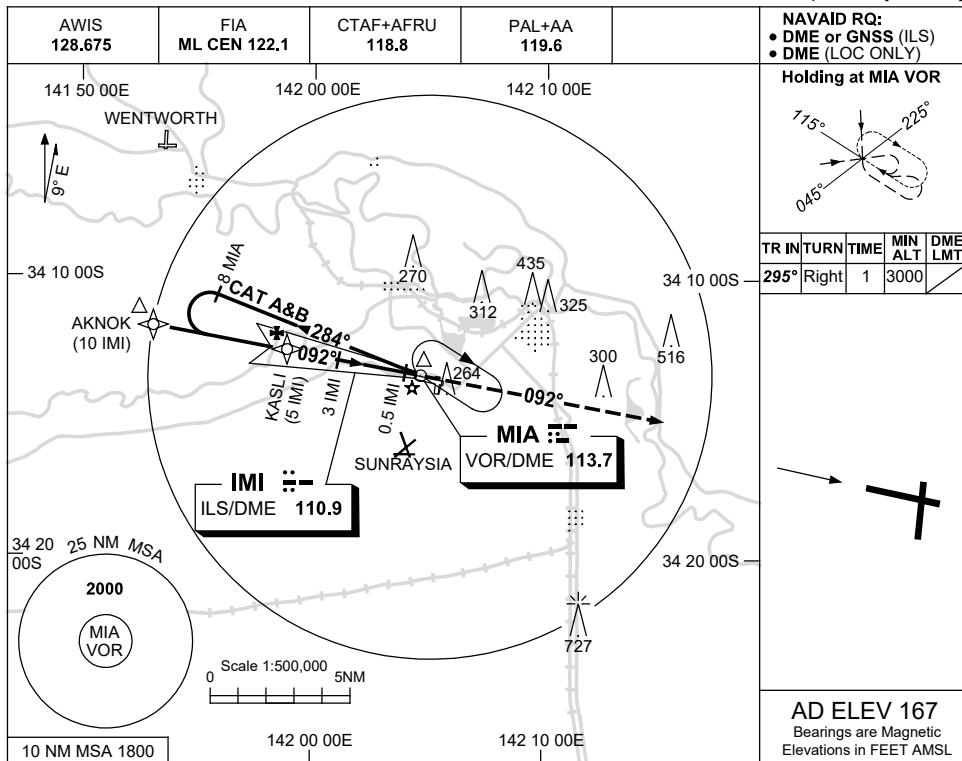


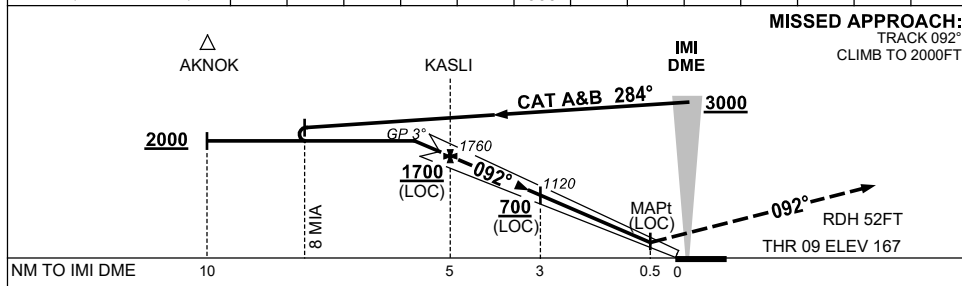
USE QNH

ILS-Z or LOC-Z RWY 09
MILDURA, VIC (YMIA)

23 MAR 2023



NM TO IMI DME	5.8	5	4	3	2	1.6							
ALT (3° APCH PATH)	2000	1760	1440	1120	800	660							



NOTES

CATEGORY	A	B	C	D
S-I ILS	470 (303) 1.7 (VIS 1.5 WITH ACTUAL QNH)		NOT APPLICABLE	
S-I LOC	660 (493-2.8)			
CIRCLING	840 (673-2.4)			
ALTERNATE	(1173-4.4)			

Changes: FROM SUP H113/22 AND SUNRAYSIA ALA.

MIAI01-174