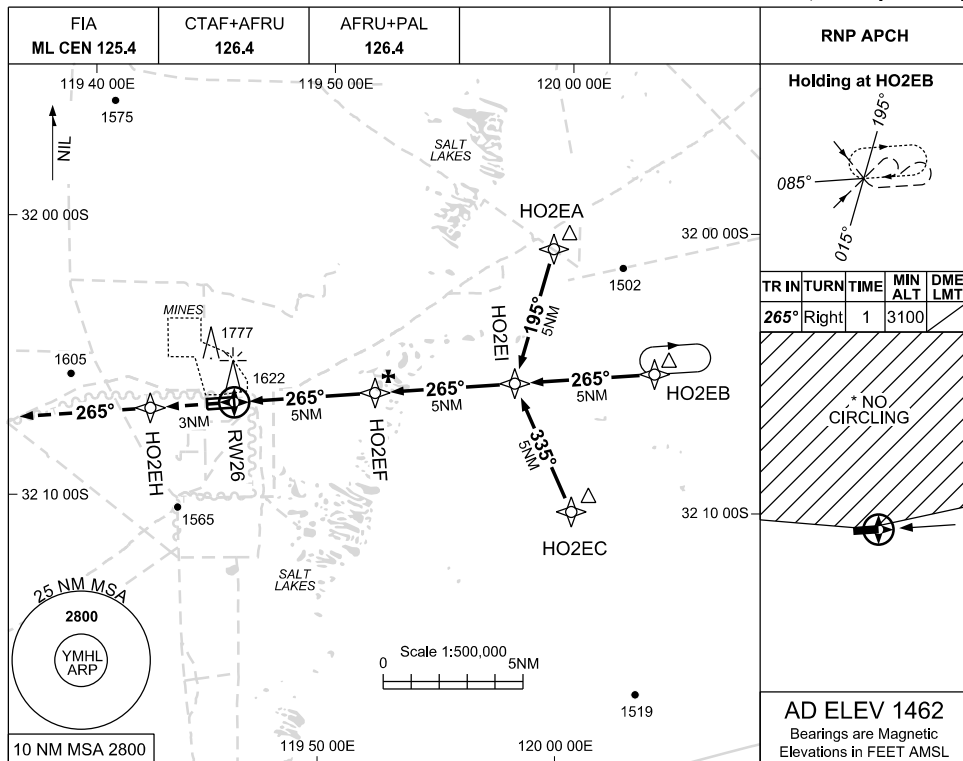


USE QNH

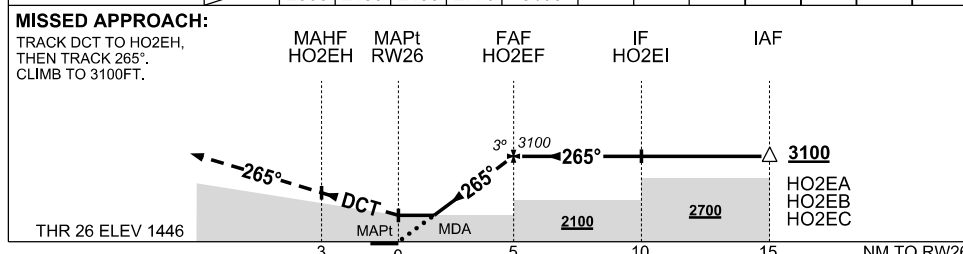
RNP RWY 26

7 SEP 2023

MOUNT HOLLAND, WA (YMHL)



NM TO NEXT WPT	RW26	1.6	2	3	4	HO2EF				
ALT (3° APCH PATH)		2000	2130	2450	2770	3100				



NOTES

- MAX IAS: INITIAL: 210KTS
- *2. NO CIRCLING N OF RWY 08/26
- YFTA PROC ADJ TO S
- ABANDONED RWY S OF RWY 08/26
- CAUTION:** BLASTING 1NM N OF RWY 08/26 REFER ERSA

CATEGORY	A	B	C	D
LNAV	2000 (554-3.1)			NOT AUTHORISED
* CIRCLING	2080 (618-2.4)		2180(718-4.0)	
ALTERNATE	(1118-4.4)		(1218-6.0)	

Changes: CHART TITLE, EDITORIAL

MHLGN02-176

