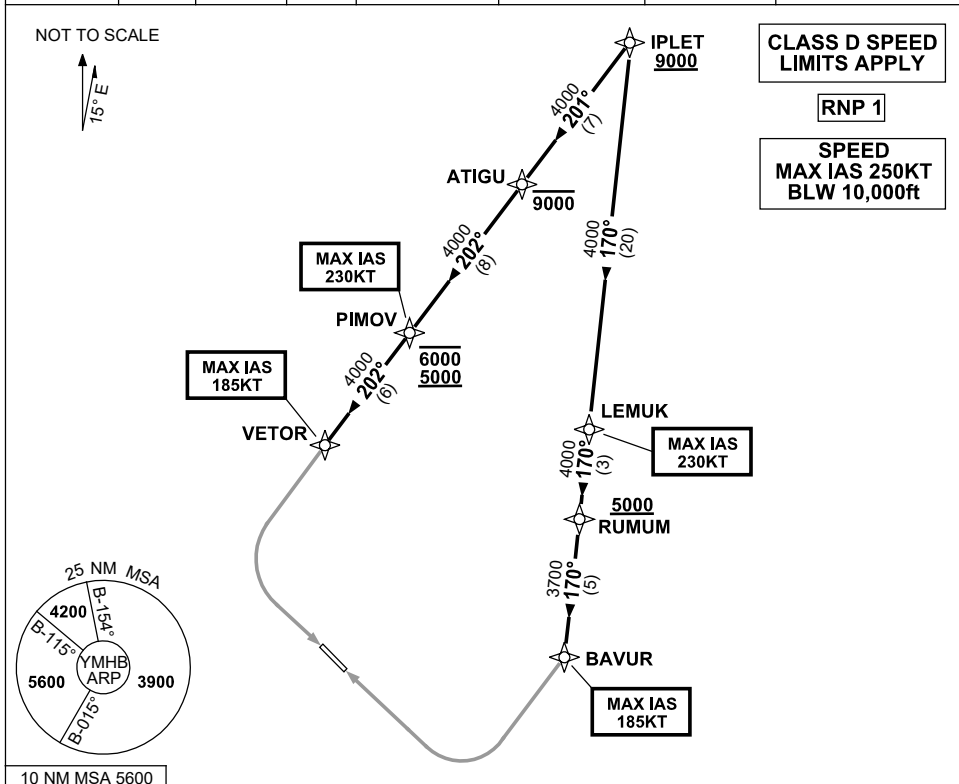


**STANDARD INSTRUMENT ARRIVAL (STAR)  
IPLET SEVEN WHISKEY ARRIVAL (RNAV)  
HOBART, TAS (YMHB)**

**21 MAR 2024**

ATIS 112.7 128.45	AWIS 122.375	SMC/ACD 121.7	TWR 118.1	HB APP/FIA (AH) ML CEN 125.55	CTAF+AFRU (AH) 118.1	AFRU+PAL (AH) 118.1	Bearings are Magnetic Elevations in FEET AMSL
----------------------	-----------------	------------------	--------------	----------------------------------	-------------------------	------------------------	--



**ARRIVAL: IPLET SEVEN WHISKEY**

**RWY 12:**

- **Cross** IPLET AT or ABV 9000ft
- From IPLET, track 201° to ATIGU
- **Cross** ATIGU AT or BLW 9000ft
- Track 202° to PIMOV
- **Cross** PIMOV BTN 5000ft and 6000ft
- MAX IAS 230KT from PIMOV
- Track 202° to VETOR
- MAX IAS 185KT from VETOR
- Turn LEFT, track via RNP W RWY 12 (AR)

**RWY 30:**

- **Cross** IPLET AT or ABV 9000ft
- From IPLET, track 170° to LEMUK
- MAX IAS 230KT from LEMUK
- Track 170° to RUMUM
- **Cross** RUMUM AT or ABV 5000ft
- Track 170° to BAVUR
- MAX IAS 185KT from BAVUR
- Turn RIGHT, track via RNP W RWY 30 (AR)

**COMMUNICATIONS FAILURE: PROCEDURE IN IMC**

- Squawk 7600, comply with vertical navigation requirements, but not below MSA.
- Track via the latest STAR clearance to the nominated runway, then fly the most suitable approach in accordance with ERSA EMERG Section 1.5.

Changes: REVISED PROC, VALIDITY INDICATOR.

MHBSR05-178