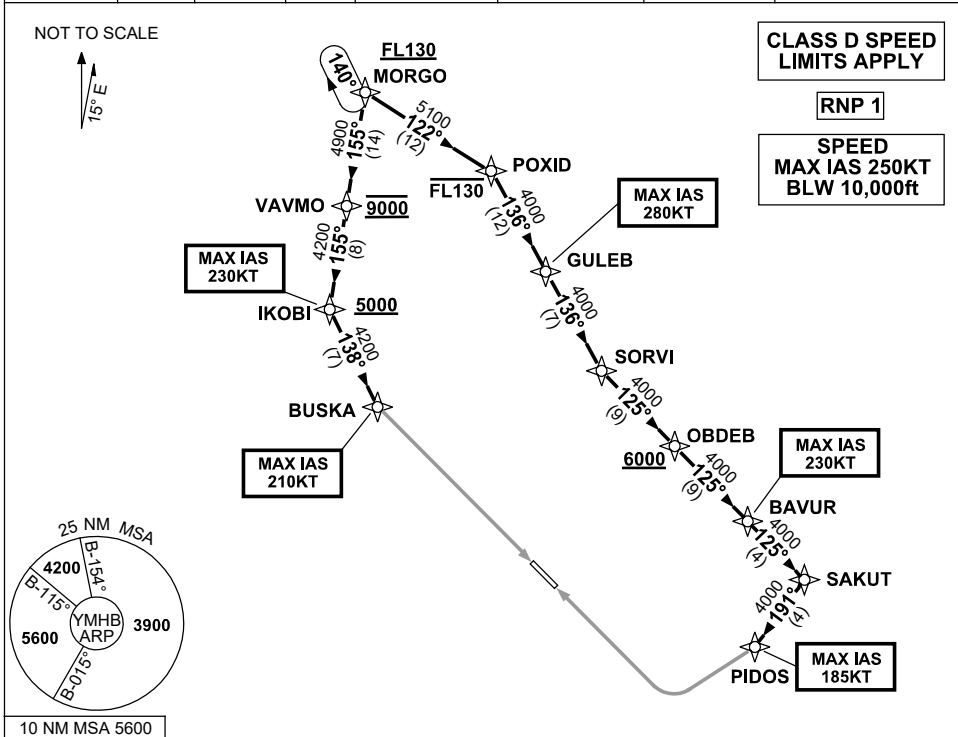


**STANDARD INSTRUMENT ARRIVAL (STAR)
MORGO THREE ALPHA ARRIVAL (RNAV)
HOBART, TAS (YMHB)**

21 MAR 2024

ATIS 112.7 128.45	AWIS 122.375	SMC/ACD 121.7	TWR 118.1	HB APP/FIA (AH) ML CEN 125.55	CTAF+AFRU (AH) 118.1	AFRU+PAL (AH) 118.1	Bearings are Magnetic Elevations in FEET AMSL
----------------------	-----------------	------------------	--------------	----------------------------------	-------------------------	------------------------	--



ARRIVAL: MORGO THREE ALPHA

RWY 12:

- Cross** MORGO AT or ABV FL130
- From MORGO track 155° to VAVMO
Cross VAVMO AT 9000ft
- Track 155° to IKOBI
Cross IKOBI AT or ABV 5000ft
MAX IAS 230KT from IKOBI
- Turn LEFT, track 138° to BUSKA
MAX IAS 210KT from BUSKA
- Turn LEFT, track via
ILS-Z or LOC-Z RWY 12,
ILS-Y or LOC-Y RWY 12 or
RNP Z RWY 12

RWY 30:

- Cross** MORGO AT or ABV FL130
- From MORGO track 122° to POXID
Cross POXID AT or BLW FL130
- Turn RIGHT, track 136° to GULEB
MAX IAS 280KT from GULEB
- Track 136° to SORVI
- Turn LEFT, track 125° to OBDEB
Cross OBDEB AT or ABV 6000ft
- Track 125° to BAVUR
MAX IAS 230KT from BAVUR
- Track 125° to SAKUT
- Turn RIGHT, track 191° to PIDOS
MAX IAS 185KT from PIDOS
- Turn RIGHT, track via
RNP Z RWY 30

COMMUNICATIONS FAILURE: PROCEDURE IN IMC

- Squawk 7600, comply with vertical navigation requirements, but not below MSA.
- Track via the latest STAR clearance to the nominated runway, then fly the most suitable approach in accordance with ERSA EMERG Section 1.5.

Changes: REVISED PROC, VALIDITY INDICATOR.

MHBSR04-178