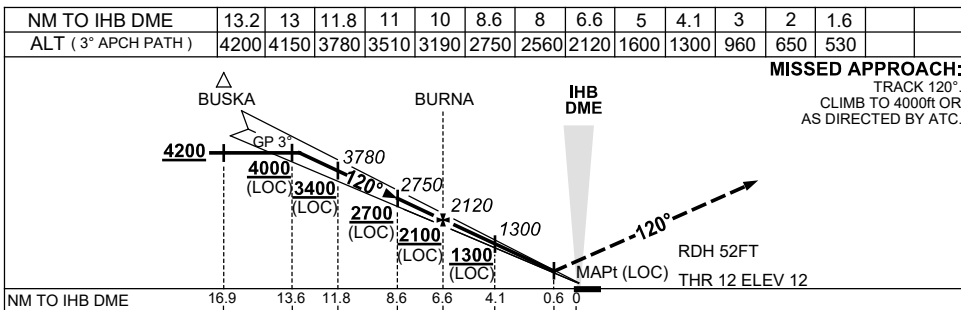
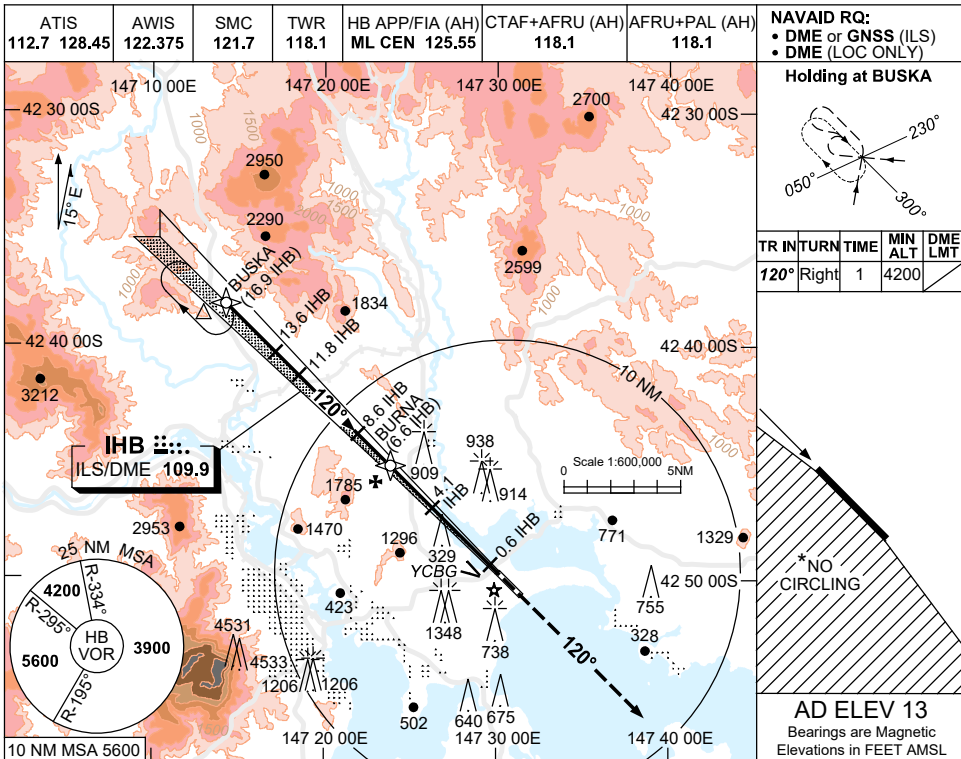


USE QNH

ILS-Z or LOC-Z RWY 12  
**HOBART, TAS (YMHB)**

21 MAR 2024



**MISSED APPROACH:**  
 TRACK 120°  
 CLIMB TO 4000ft OR  
 AS DIRECTED BY ATC.

**NOTES**

1. MAX IAS:  
HOLDING: 200KT.
- \* 2. NO CIRCLING WEST OF RWY 12/30.
- # 3. MIN MAP GRAD ILS 4.2%,  
MIN MAP GRAD LOC 3.9%  
CTA CONTAINMENT.
4. COLOUR: SEE SPEC NOTICES.

CATEGORY	A	B	C	D
S-I ILS #		320 (308) 0.8		
S-I LOC#		530 (517-2.1)		
CIRCLING*	1240 (1227-2.4)		1530 (1517-4.0)	1600 (1587-5.0)
ALTERNATE	(1727-4.4)		(2017-6.0)	(2087-7.0)

Changes: DELETED MAX IAS AT BUSKA, VIS, Editorial.

MHBII02-178