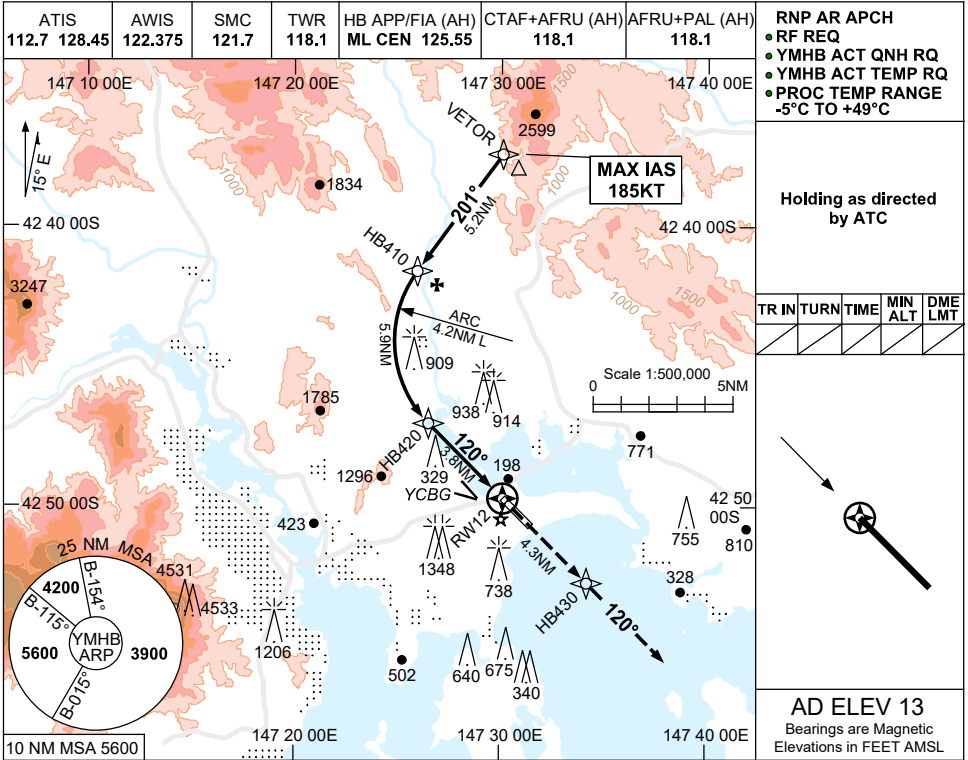


FOR CASA APPROVED OPERATORS ONLY RNP-AR APPROACH PROCEDURE

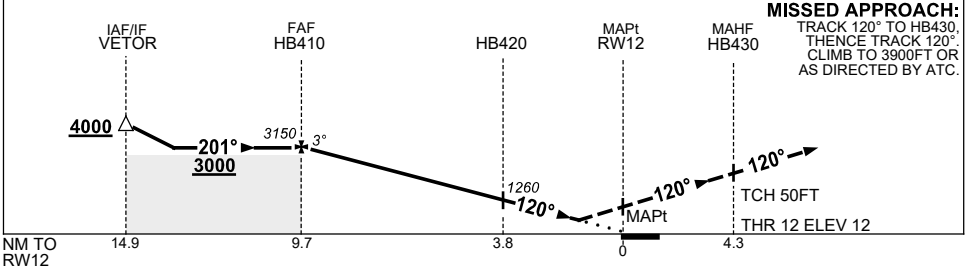
USE QNH

RNP W RWY 12 (AR)
HOBART, TAS (YMHB)

7 SEP 2023



NM TO NEXT WPT	HB410	5	4	3	2	1	HB420	3	2	1	RWY12		
ALT (3° APCH PATH)	3150	2850	2530	2220	1900	1580	1260	1020	700	370			



CATEGORY	A	B	C	D
RNP (0.3)	370 (358-1.2)			
CIRCLING	NOT AUTHORISED			
ALTERNATE	(1727-4.4)	(2017-6.0)	(2087-7.0)	

- NOTES**
- MAX IAS:
VETOR : 185KT.
 - COLOUR: SEE SPEC NOTICES.

Changes: YCBG DEPICTION.

MHBG03-176