

USE QNH

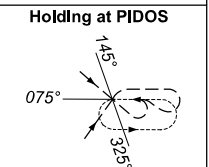
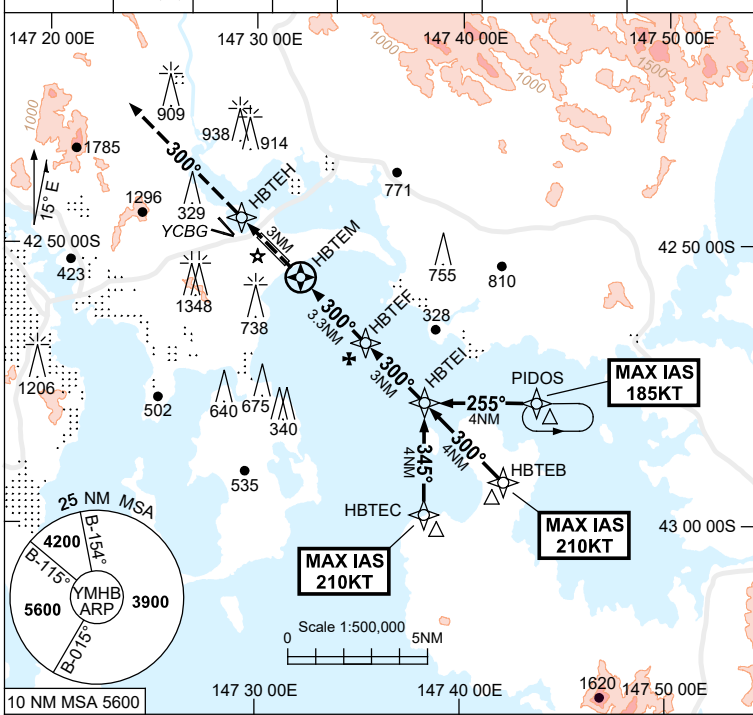
RNP Z RWY 30

**HOBART, TAS (YMHB)**

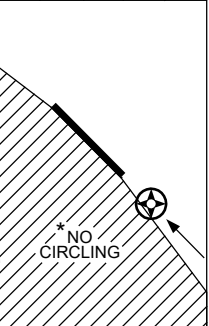
7 SEP 2023

ATIS 112.7 128.45	AWIS 122.375	SMC 121.7	TWR 118.1	HB APP/FIA (AH) ML CEN 125.55	CTAF+AFRU (AH) 118.1	AFRU+PAL (AH) 118.1
----------------------	-----------------	--------------	--------------	----------------------------------	-------------------------	------------------------

**RNP APCH**  
LNAV/VNAV RQMNTS:  
 ● YMHB QNH RQ  
 ● YMHB TEMP RQ  
 ● PROC TEMP RANGE  
 -5°C TO +61°C



TR	IN	TURN	TIME	MIN	DME
255°	Left	1	4000		

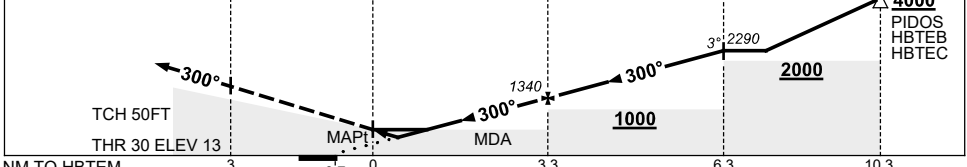


**AD ELEV 13**  
Bearings are Magnetic  
Elevations in FEET AMSL

NM TO NEXT WPT	HBTEM	0.3	0.7	0.8	1.2	2	HBTEF	1	2	HBTEI		
ALT (3° APCH PATH)		370	520	550	690	920	1340	1660	1970	2290		

**MISSED APPROACH:**

TRACK DCT TO HBTEH, THEN TRACK 300° CLIMB TO 4200FT OR AS DIRECTED BY ATC.



- NOTES**
- MAX IAS:  
PIDOS : 185KT  
HBTEB : 210KT  
HBTEC : 210KT.
  - \* NO CIRCLING WEST OF RWY 12/30.
  - COLOUR: SEE SPEC NOTICES.

CATEGORY	A	B	C	D
LNAV/VNAV (2.5% MAP)		520 (507-2.9)		
LNAV/VNAV (3.5% MAP)		370 (357-2.0)		
LNAV (2.5% MAP)		690 (677-3.9)		
LNAV (3.2% MAP)		550 (537-3.0)		
CIRCLING *	1240 (1227-2.4)	1530 (1517-4.0)	1600 (1587-5.0)	
ALTERNATE	(1727-4.4)	(2017-6.0)	(2087-7.0)	

Changes: YCBG DEPICTION.

MHBGN02-176