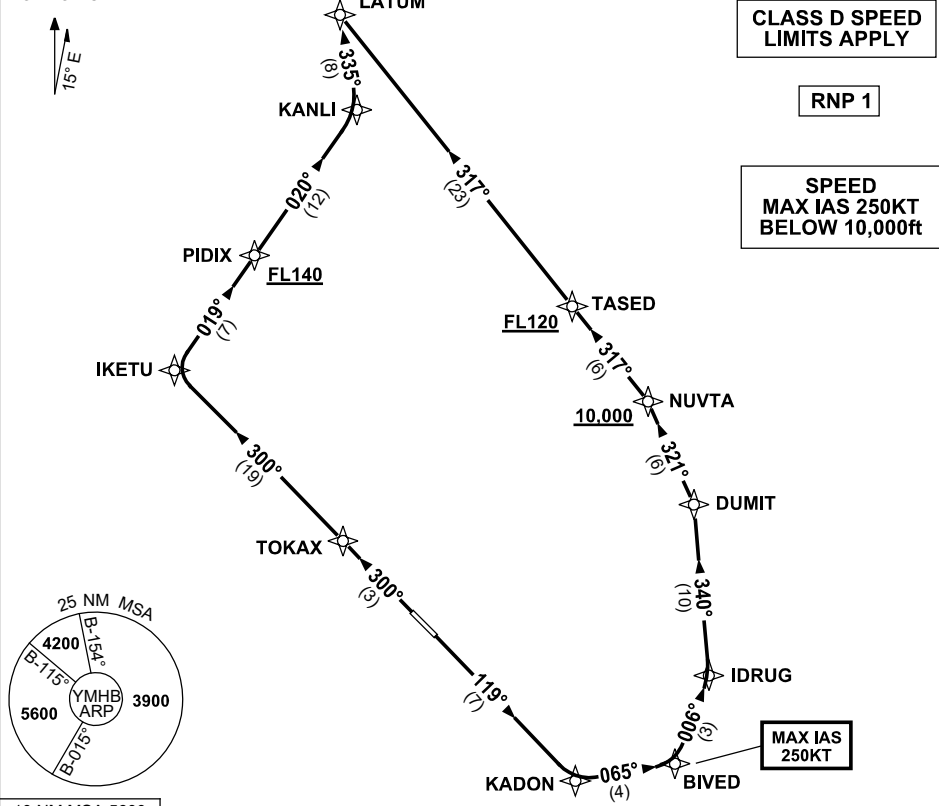


**STANDARD INSTRUMENT DEPARTURES (SID)  
LATUM TWO DEPARTURE (JET) (RNAV)  
HOBART TAS (YMHB)**

**30 NOV 2023**

ATIS 112.7 128.45	AWIS 122.375	SMC/ACD 121.7	TWR 118.1	HB APP/FIA (AH) ML CEN 125.55	CTAF+AFRU (AH) 118.1	AFRU+PAL (AH) 118.1	Bearings are Magnetic Elevations in FEET AMSL
----------------------	-----------------	------------------	--------------	----------------------------------	-------------------------	------------------------	--

NOT TO SCALE



10 NM MSA 5600

**LATUM TWO DEPARTURE**

**RWY 12**

- GRAD 3.3%  
MAX IAS 250KT until BIVED
- Track 119° to KADON
- Turn LEFT, track 065° to BIVED
- Turn LEFT, track 006° to IDRUG
- Turn LEFT, track 340° to DUMIT
- Turn LEFT, track 321° to NUVTA  
**Cross** NUVTA AT or ABV 10,000ft  
(RQ GRAD to NUVTA 5.6%)
- Track 317° to TASED  
**Cross** TASED AT or ABV FL120  
(RQ GRAD NUVTA to TASED 5.5%)
- Track 317° to LATUM

**RWY 30**

- GRAD 4.1% to 1800ft thence 3.3%
- Track 300° to TOKAX
- Track 300° to IKETU
- Turn RIGHT, track 019° to PIDIX  
**Cross** PIDIX AT or ABV FL140  
(RQ GRAD to PIDIX 8.3%)
- Track 020° to KANLI
- Turn LEFT, track 335° to LATUM

Changes: SPEED RESTRICTION, Editorial.

MHBDP07-177