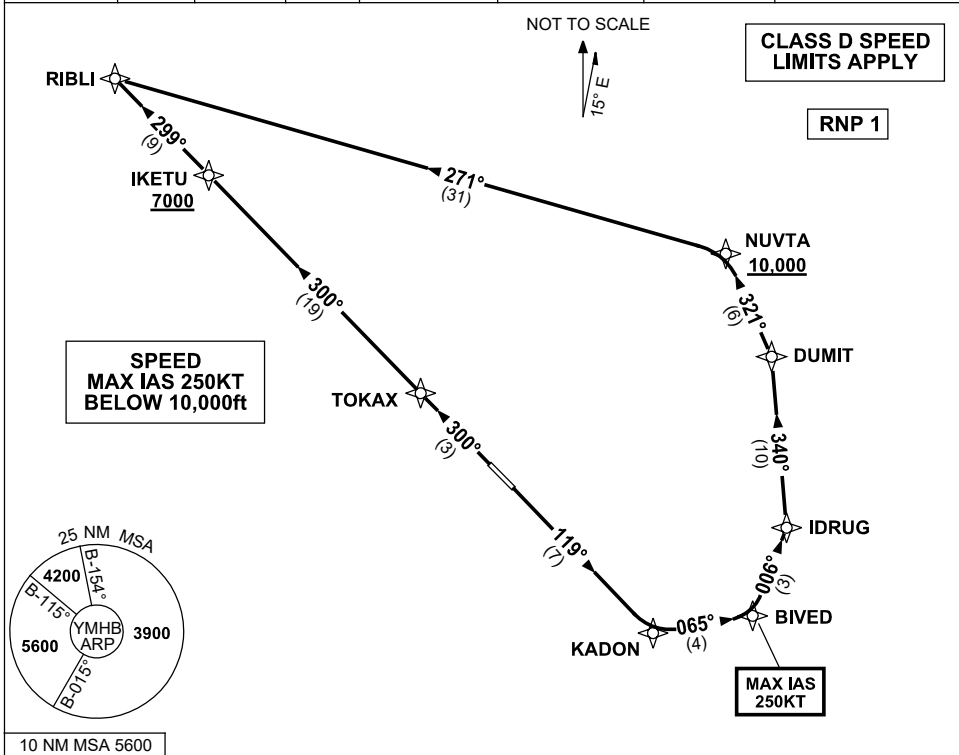


**STANDARD INSTRUMENT DEPARTURES (SID)  
RIBLI ONE DEPARTURE (RNAV)  
HOBART TAS (YMHB)**

**30 NOV 2023**

ATIS 112.7 128.45	AWIS 122.375	SMC/ACD 121.7	TWR 118.1	HB APP/FIA (AH) ML CEN 125.55	CTAF+AFRU (AH) 118.1	AFRU+PAL (AH) 118.1	Bearings are Magnetic Elevations in FEET AMSL
----------------------	-----------------	------------------	--------------	----------------------------------	-------------------------	------------------------	--



**RIBLI ONE DEPARTURE**

**RWY 12**

- GRAD 3.3%  
MAX IAS 250KT until BIVED
- Track 119° to KADON
- Turn LEFT, track 065° to BIVED
- Turn LEFT, track 006° to IDRUG
- Turn LEFT, track 340° to DUMIT
- Turn LEFT, track 321° to NUVTA
- **Cross** NUVTA AT or ABV 10,000ft  
(RQ GRAD to NUVTA 5.6%)
- Turn LEFT, track 271° to RIBLI

**RWY 30**

- GRAD 4.1% to 1800ft thence 3.3%
- Track 300° to TOKAX
- Track 300° to IKETU
- **Cross** IKETU AT or ABV 7000ft  
(RQ GRAD to IKETU 5.5%)
- Track 299° to RIBLI

Changes: RIBLI REPLACES CLARK, VALIDITY NUMBER, SPEED RESTRICTION, Editorial.

MHBDP06-177