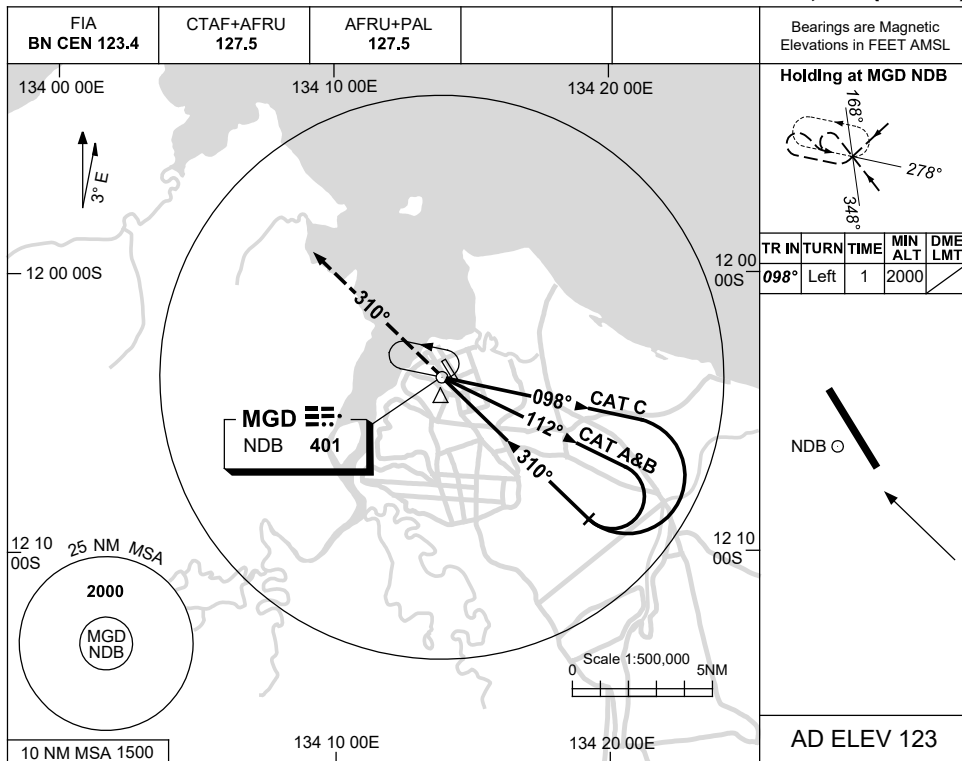


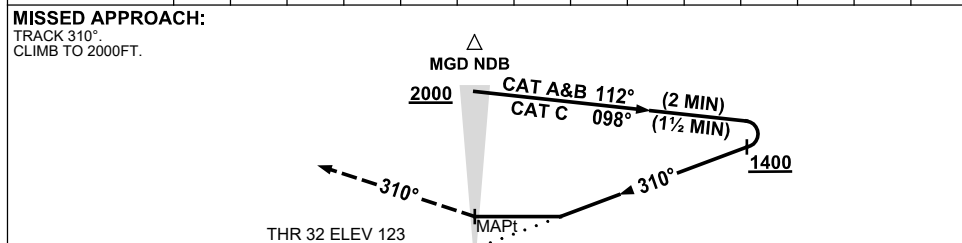
USE QNH

NDB RWY 32
MANINGRIDA, NT (YMGD)

15 AUG 2019



DME DIST	NOT APPLICABLE			
ALT				



NOTES

CATEGORY	A	B	C	D
S-I NDB	730 (607-3.4)			NOT APPLICABLE
CIRCLING	730 (607-2.4)	830 (707-4.0)		
ALTERNATE	(1107-4.4)		(1207-6.0)	

1. MAX IAS:
INITIAL : 210KT.
2. AWIS (PHONE)
08 7922 2509

Changes: NOTE 2, COORD FORMAT.

MGDNB01-160