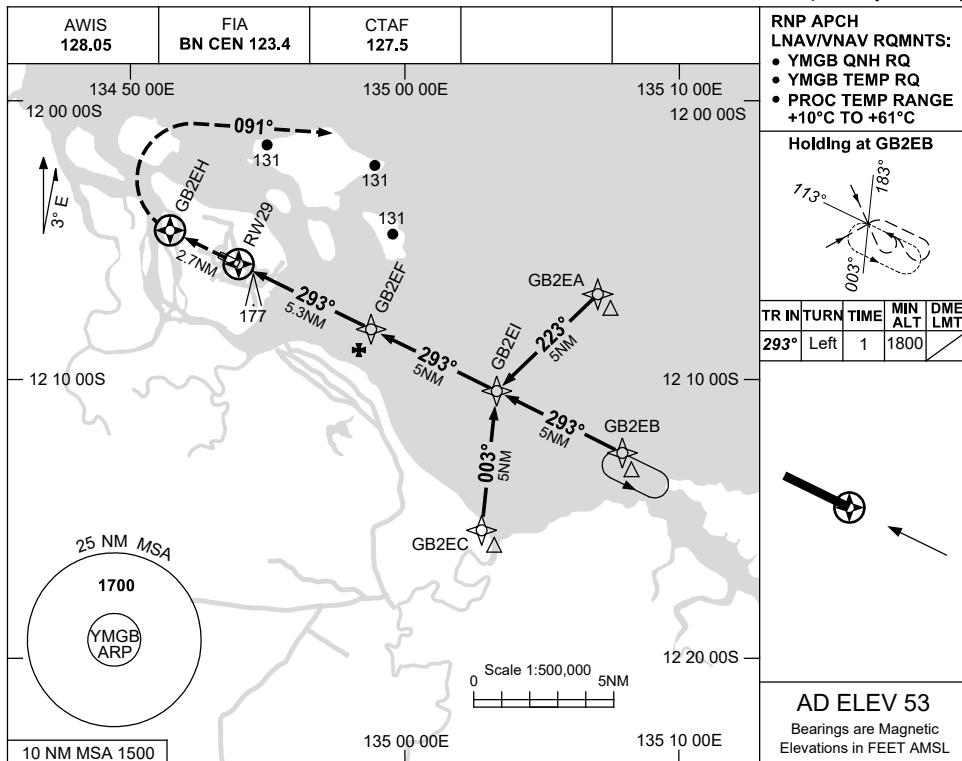


USE QNH

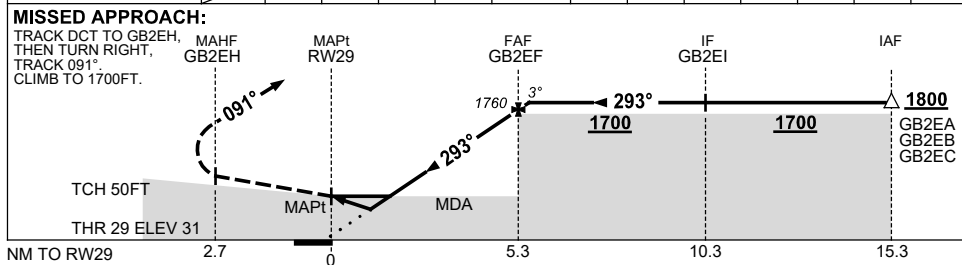
RNP RWY 29

**MILINGIMBI, NT (YMGB)**

8 SEP 2022



NM TO NEXT WPT	RW29	1.1	1.7	3	4	GB2EF	0.1						
ALT (3° APCH PATH)		420	620	1040	1350	1760	1800						



**NOTES**

CATEGORY	A	B	C	D
LNAV/VNAV		420 (389-2.2)		NOT APPLICABLE
LNAV		620 (589-3.3)		
CIRCLING	660 (607-2.4)		760 (707-4.0)	
ALTERNATE	(1107-4.4)		(1207-6.0)	

1. MAX IAS:  
INITIAL : 210KT.

Changes: CHART TITLE, PBN SPECIFICATION BOX.

MGBGN02-172