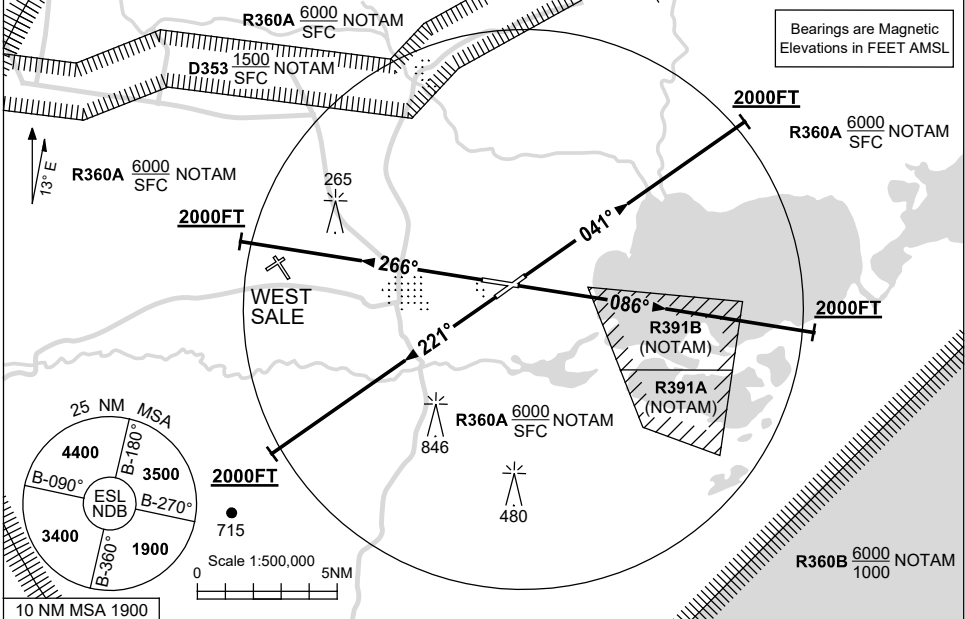


**STANDARD INSTRUMENT DEPARTURES (SID)
EAST SALE FIVE DEPARTURE (RADAR)
EAST SALE, VIC (YMES)**

30 NOV 2023

AFIS 118.3	ATIS (AWIS AH) 125.4 350	SMC 127.25	ACD 134.1	TWR 118.3 257.8	APP 123.3 340.2	ACC 135.8	FIA (AH) ML CEN 124.0	CTAF+AFRU (AH) 118.3
---------------	-----------------------------	---------------	--------------	--------------------	--------------------	--------------	--------------------------	-------------------------



EAST SALE FIVE DEPARTURE (RADAR)

RWY 04

- GRAD 3.3%
- Track 041°
- At 2000ft, but not before DER, turn to assigned heading or track

RWY 09

- GRAD 3.3%
- Track 086°
- At 2000ft, but not before DER, turn to assigned heading or track

RWY 22

- GRAD 3.6% to 1200FT then 3.3%
- Track 221°
- At 2000ft, but not before DER, turn to assigned heading or track

RWY 27

- GRAD 3.3%
- Track 266°
- At 2000ft, but not before DER, turn to assigned heading or track

COMMUNICATIONS FAILURE PROCEDURE

On recognition of communication failure

- Squawk 7600
- Maintain last assigned vector for two minutes, and
- CLIMB IF NECESSARY TO MINIMUM SAFE ALTITUDE, to maintain terrain clearance, then
- proceed in accordance with the latest ATC route clearance acknowledged.

Changes: R359A-B DELETED, R360A-B ADDED.

MESDP01-177