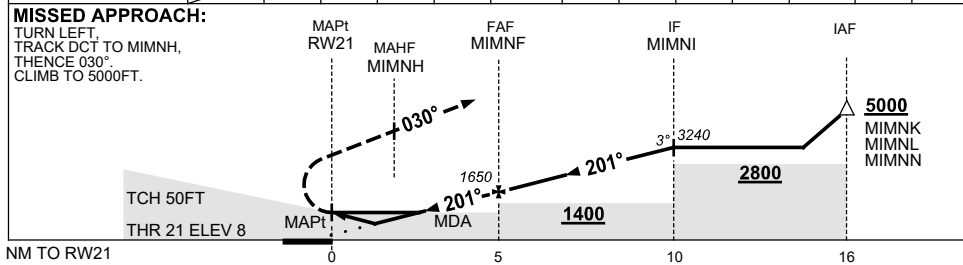
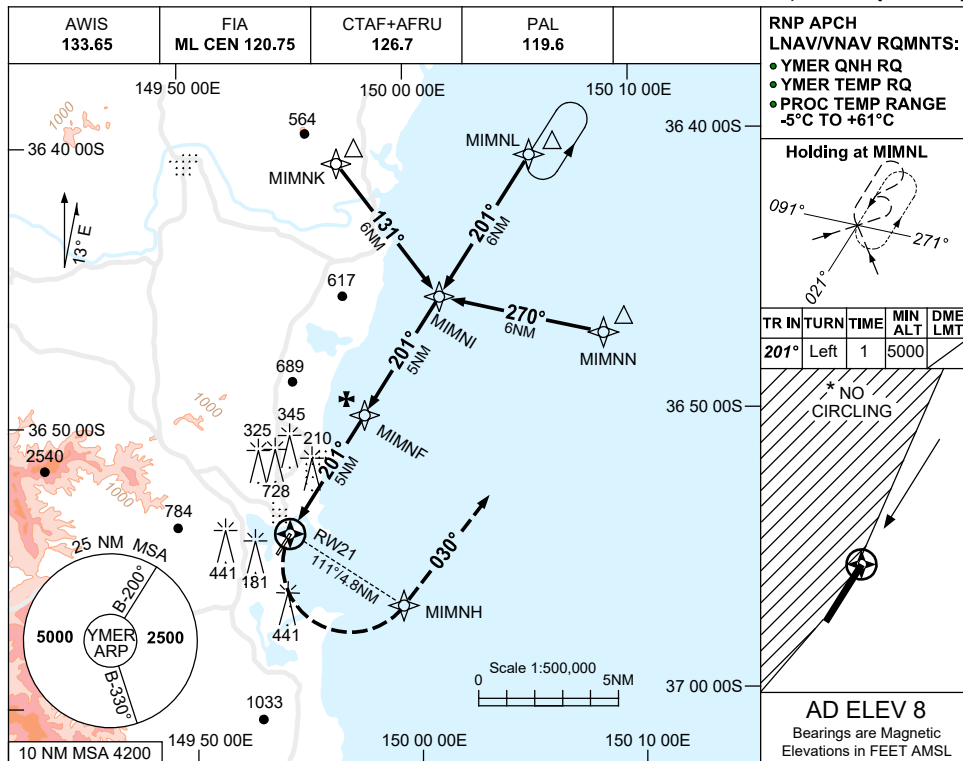


USE QNH

RNP RWY 21
MERIMBULA, NSW (YMER)

23 MAR 2023



CATEGORY	A	B	C	D
LNAV/VNAV		670 (662-3.8)		NOT APPLICABLE
LNAV		830 (822-4.7)		
CIRCLING *	1140 (1132-2.4)		1270 (1262-4.0)	
ALTERNATE	(1632-4.4)		(1762-6.0)	

- NOTES**
- MAX IAS: INITIAL : 210KT.
 - * NO CIRCLING WEST OF RWY 03/21.
 - COLOUR: SEE SPEC NOTICES.

Changes: CHART TITLE, PBN SPECIFICATION BOX.

MERGN02-174