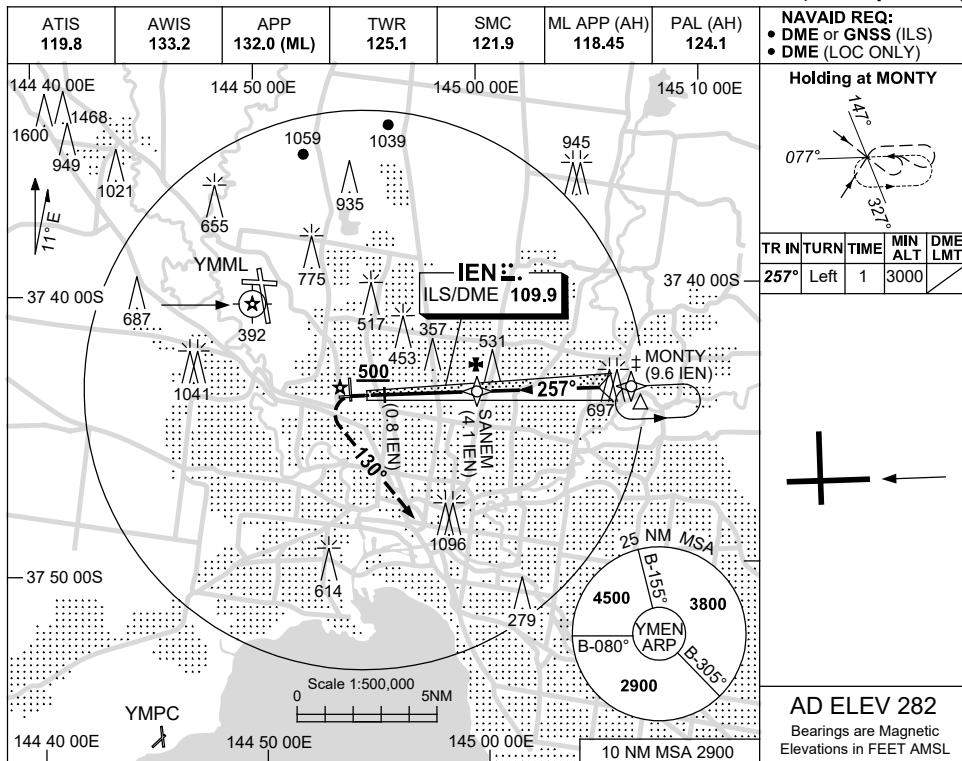


USE QNH

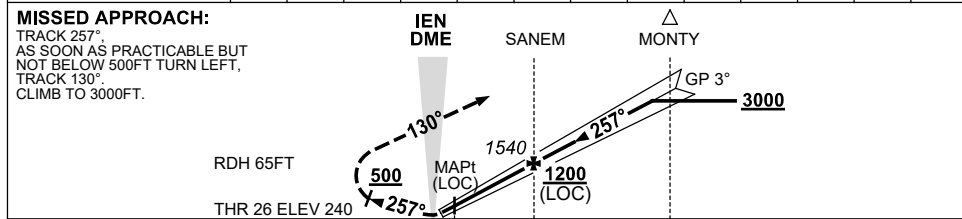
ILS or LOC RWY 26

15 JUN 2023

MELBOURNE/ESSENDON, VIC (YMEN)



NM TO IEN DME	1.7	2	3	4.1	5	6	7	8	8.7				
ALT (3° APCH PATH)	770	880	1200	1540	1840	2150	2470	2790	3000				



NM TO IEN DME	0	0.8	4.1	9.6
NM TO THR 26	0	0.6	3.9	9.4

**NOTES**

1. MAX IAS: HOLDING: 230KT
- ±2. AIRCRAFT MAY BE RADAR VECTORED TO IAF.

**CAUTION**

INCORRECT COURSE INDICATION POSSIBLE WITHIN 10NM EAST OF MONTY. CROSS CHECK WITH GNSS.

CATEGORY	A	B	C	D
S-I ILS		590 (350)	1.9 (VIS 1.5 WITH ACTUAL QNH)	
S-I LOC		770 (530-3.0)		
CIRCLING	990 (708-2.4)		1260 (978-4.0)	1540 (1258-5.0)
ALTERNATE	(1208-4.4)		(1478-6.0)	(1758-7.0)

Changes: NOTES, MAX IAS HOLDING, Editorial.

MENI01-175