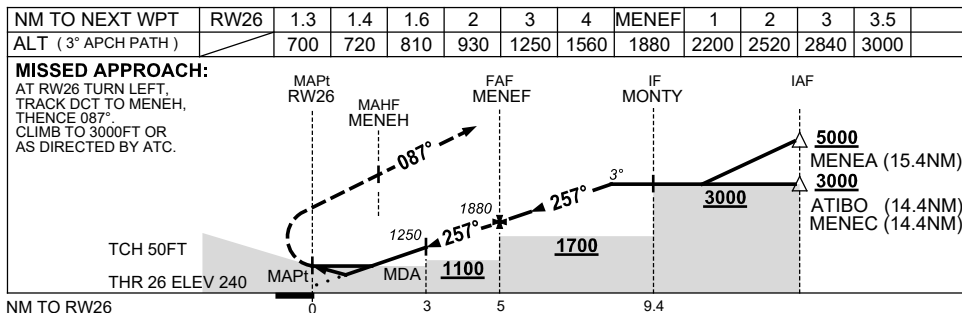
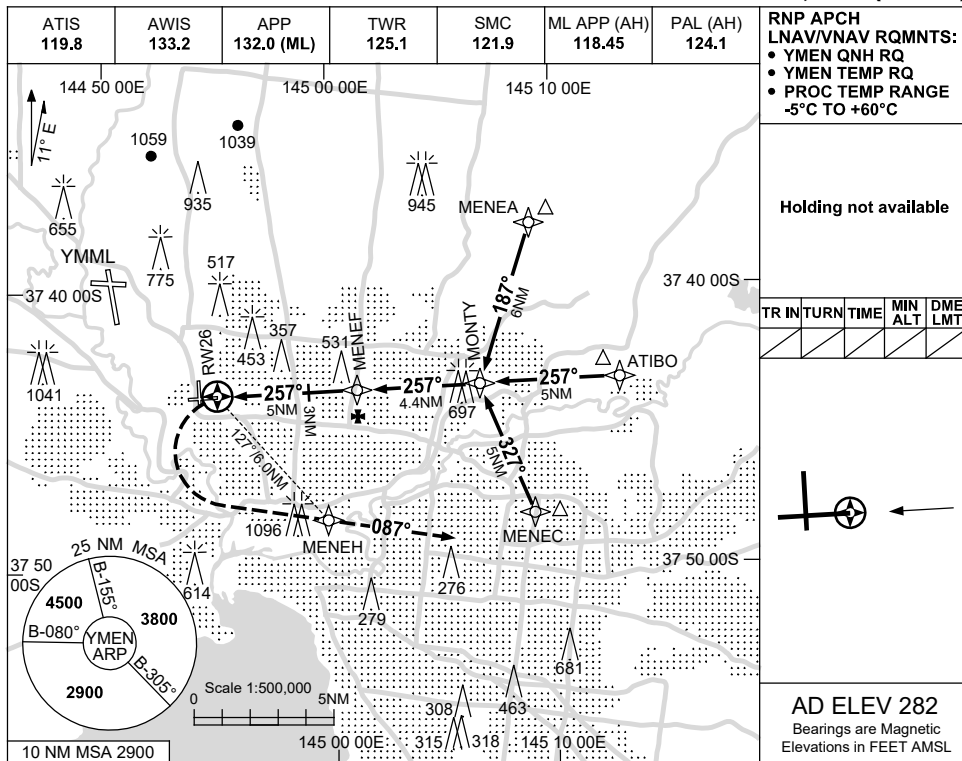


USE QNH

RNP RWY 26

15 JUN 2023

MELBOURNE/ESSENDON, VIC (YMEN)



**NOTES**

CATEGORY	A	B	C	D
LNAV/VNAV		700 (460-2.6)		720 (480-2.7)
LNAV		810 (570-3.2)		
CIRCLING	990 (708-2.4)		1260 (978-4.0)	1540 (1258-5.0)
ALTERNATE	(1208-4.4)		(1478-6.0)	(1758-7.0)

- MAX IAS:  
INITIAL : 210KT.  
MAP TURN: 240KT.

Changes: MINIMUM SEGMENT ALT, Editorial.

MENGN01-175