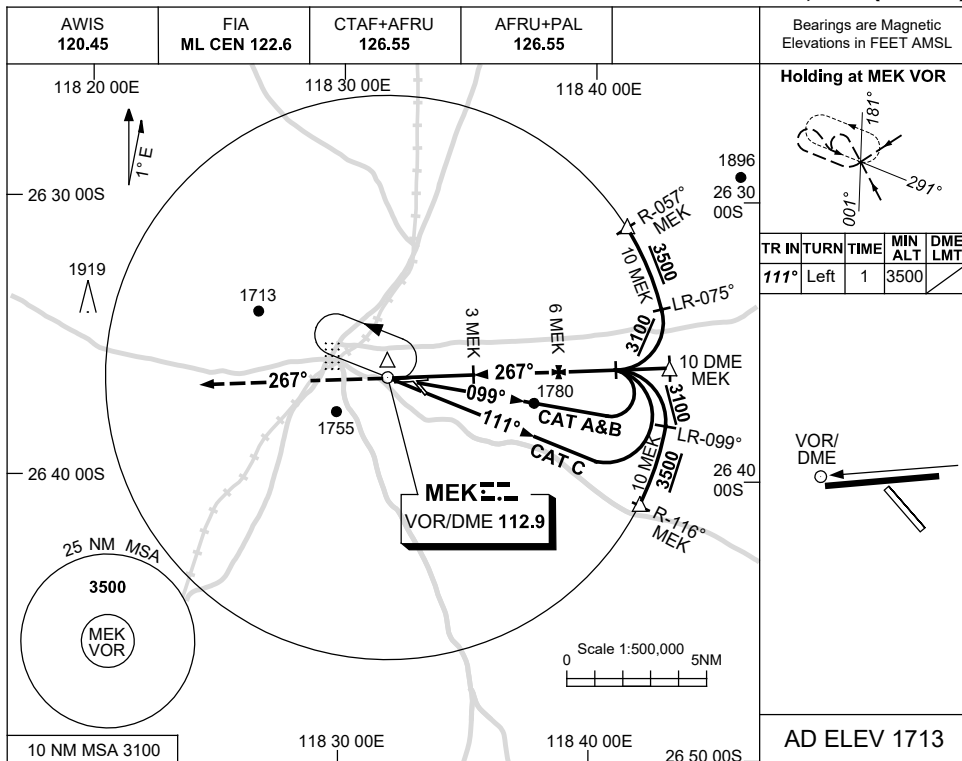


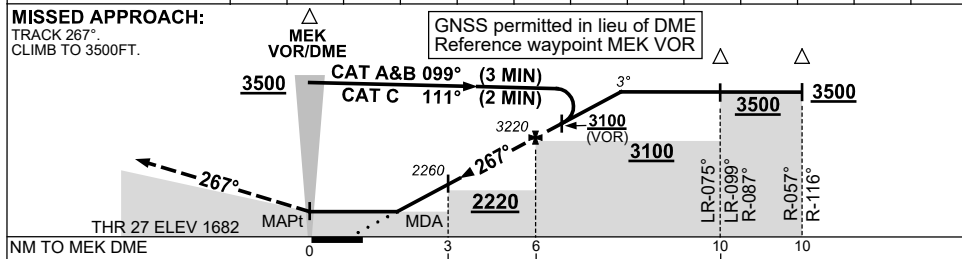
USE QNH

VOR RWY 27
MEEKATHARRA, WA (YMEK)

15 JUN 2023



DIST TO MEK DME	3	3.3	4	5	6	6.9								
ALT (3° APCH PATH)	2260	2370	2580	2900	3220	3500								



NM TO MEK DME	0	3	6	10	10
NM TO RWY 27		1.7	4.7	8.7	

NOTES

CATEGORY	A	B	C	D
S-I VOR		2370 (688-3.9)		NOT APPLICABLE
S-I VOR/DME		2260 (578-3.3)		
CIRCLING	2440 (727-2.4)		2530 (817-4.0)	
ALTERNATE	(1227-4.4)		(1317-6.0)	

1. MAX IAS:
 INITIAL : 210KT.

Changes: MAG TRACKS.

MEKVO02-175