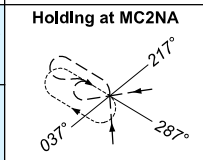
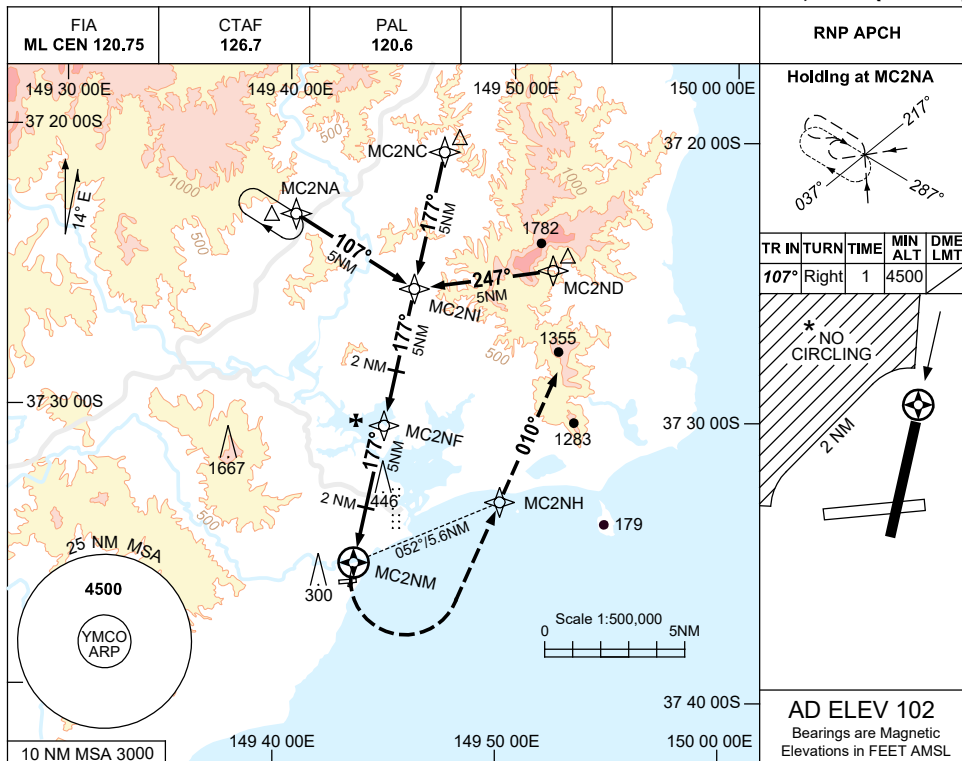


USE QNH

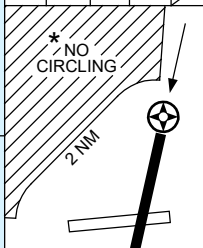
RNP RWY 18

23 MAR 2023

MALLACOOTA, VIC (YMCO)

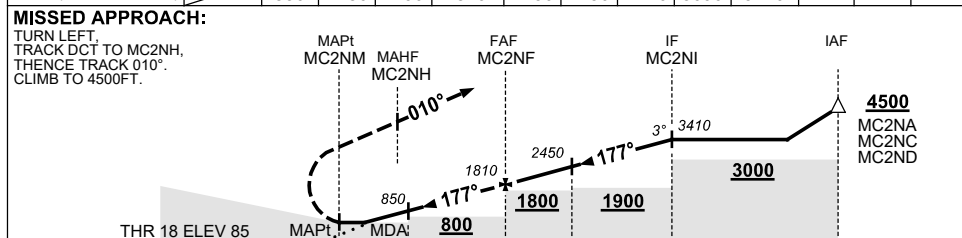


TR	IN	TURN	TIME	MIN ALT	DME LMT
107°	Right	1	4500		



AD ELEV 102
Bearings are Magnetic
Elevations in FEET AMSL

NM TO NEXT WPT	MC2NM	2	3	4	MC2NF	1	2	3	4	MC2NI			
ALT (3° APCH PATH)		850	1180	1490	1810	2130	2450	2770	3090	3410			



NM TO MC2NM: 0.3, 2, 5, 7, 10, 15

- NOTES**
- MAX IAS: INITIAL : 210KT.
 - NO CIRCLING IN SECTOR NW OF RWY 07 AND 18, BEYOND 2 NM.
 - COLOUR: SEE SPEC NOTICES.
 - AWIS (PHONE) 03 8470 3212

CATEGORY	A	B	C	D
LNAV	850 (765-4.4)			NOT APPLICABLE
CIRCLING *	910 (808-2.4)		1270 (1168-4.0)	
ALTERNATE	(1308-4.4)		(1668-6.0)	

Changes: FROM SUP H115/22, CHART TITLE, PBN SPECIFICATION BOX. MCOGN01-174