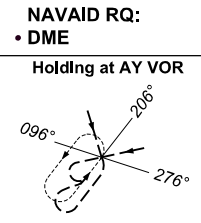
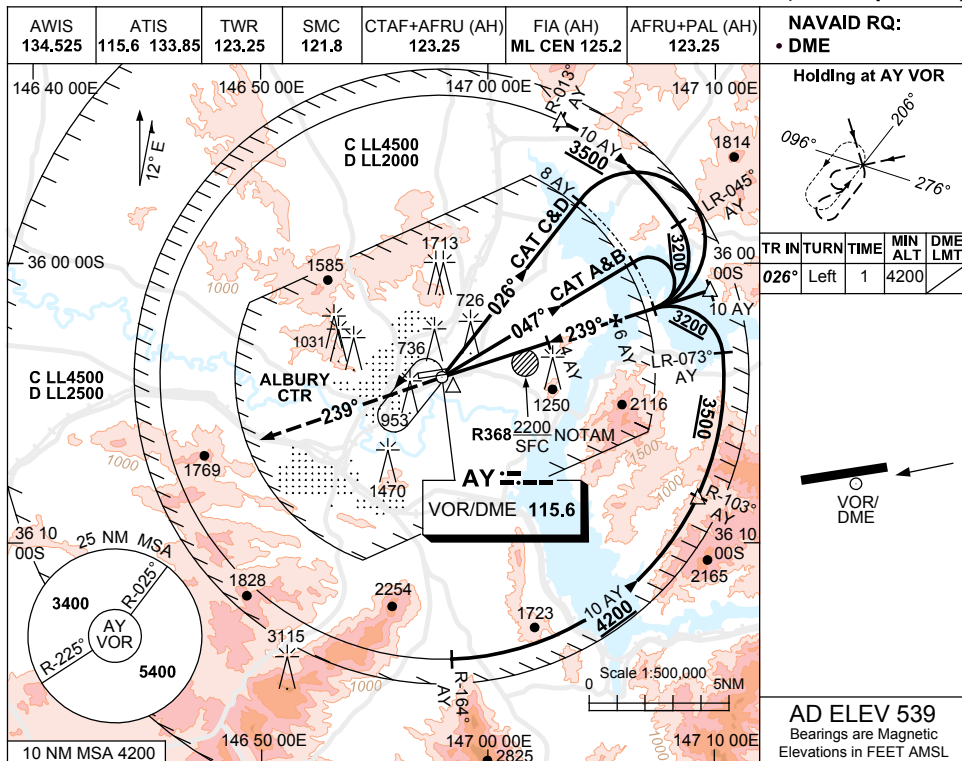


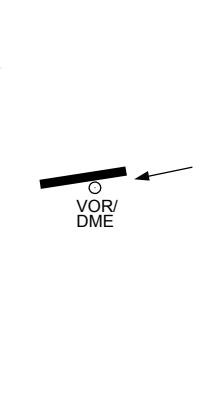
USE QNH

VOR RWY 25
ALBURY, NSW (YMAJ)

30 NOV 2023

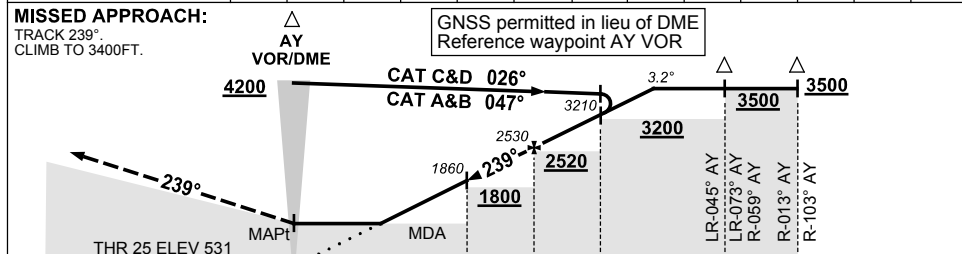


TR IN	TURN	TIME	MIN ALT	DME LMT
026°	Left	1	4200	



AD ELEV 539
 Bearings are Magnetic
 Elevations in FEET AMSL

DIST TO AY DME	2.3	3	4	5	6	7	8	8.9				
ALT (3.2° APCH PATH)	1270	1520	1860	2190	2530	2870	3210	3500				



10 NM TO AY DME

- NOTES**
- MAX IAS:
 BASETURN
 CAT C&D : 200KT.
 - APCH PATH ANGLE DOES NOT COINCIDE WITH PAPI ON GLIDE SLOPE INDICATION.
 - COLOUR:** SEE SPEC NOTICES.
 - PROC NOT AVBL WHEN R368 ACT UNLESS ADVISED BY ATC.

CATEGORY	A	B	C	D
S-I VOR/DME	1270 (739-4.2)			
CIRCLING	2050 (1511-2.4)	2220 (1681-4.0)	2270 (1731-5.0)	
ALTERNATE	(2011-4.4)		(2181-6.0)	(2231-7.0)

Changes: CIRCLING & ALTERNATE CAT C MINIMA, NEW LOGO.

MAYV002-177