

**STANDARD INSTRUMENT ARRIVAL (STAR)
ARRAN ONE ARRIVAL (RNAV)
ALBURY, NSW (YMAY)**

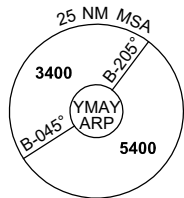
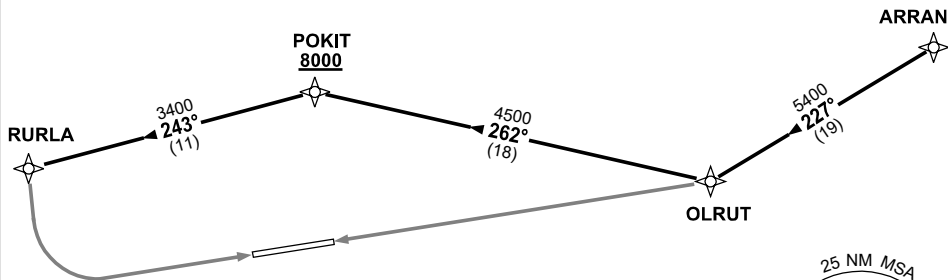
23 MAR 2023

AWIS 134.525	ATIS 115.6 133.85	TWR 123.25	SMC 121.8	CTAF+AFRU (AH) 123.25	FIA (AH) ML CEN 125.2	AFRU+PAL (AH) 123.25	Bearings are Magnetic Elevations in FEET AMSL
-----------------	----------------------	---------------	--------------	--------------------------	--------------------------	-------------------------	--

NOT TO SCALE

**CLASS D SPEED
LIMITS APPLY**

RNP 1



10 NM MSA 4200

ARRIVAL: ARRAN ONE

- From ARRAN track 227° to OLRUT

RWY 07:

- Track 262° to POKIT
Cross POKIT AT or ABV 8000ft
- Turn LEFT, track 243° to RURLA
- Track via RNP Z RWY 07 or RNP Y RWY 07 (LNAV/VNAV ONLY)

RWY 25:

- Track via RNP RWY 25

NOTE: PROC NOT AVBL WHEN R368 ACT UNLESS ADVISED BY ATC.