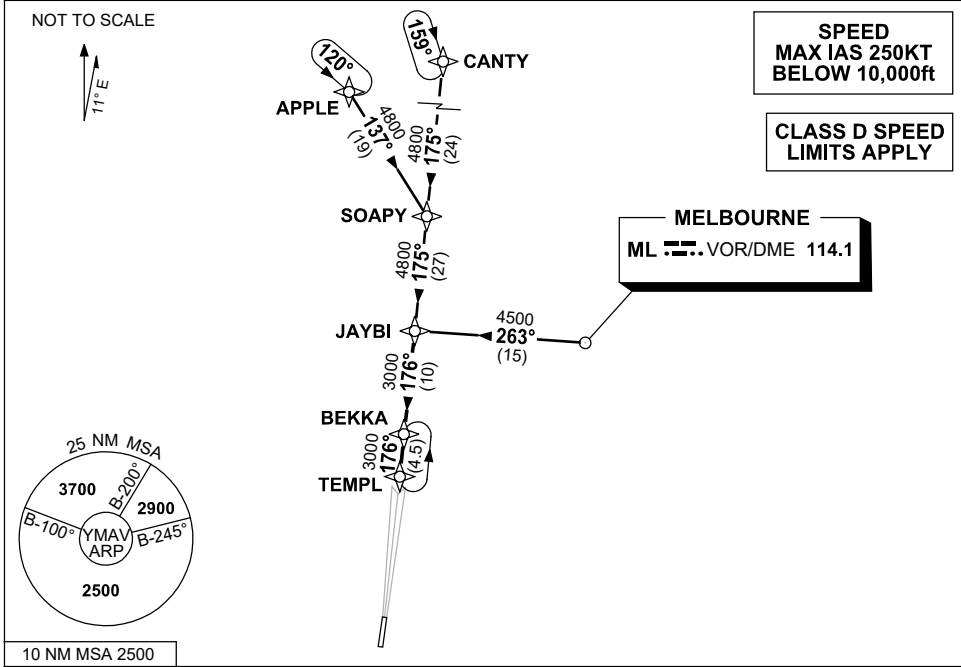


**STANDARD INSTRUMENT ARRIVAL (STAR)
JAYBI FIVE ARRIVAL (RNAV)
AVALON, VIC (YMAV)**

24 MAR 2022

ATIS 118.2 116.1	AWIS (AH) 116.1	AV APP 133.55	TWR 120.1	FIA (AH) ML CEN 135.7	CTAF+AFRU (AH) 120.1	AFRU+PAL (AH) 120.1	Bearings are Magnetic Elevations in FEET AMSL
---------------------	--------------------	------------------	--------------	--------------------------	-------------------------	------------------------	--



TRANSITION:

CANTY: From CANTY to JAYBI:
Track 175° to SOAPY
Track 175° to JAYBI
Then follow ARRIVAL instruction

MELBOURNE: From ML VOR to JAYBI:
(ML VOR) Track 263° to JAYBI
Then follow ARRIVAL instruction

APPLE: From APPLE to JAYBI:
Track 137° to SOAPY
Track 175° to JAYBI
Then follow ARRIVAL instruction

ARRIVAL: JAYBI FIVE (RNAV):

RWY 18: From JAYBI:
• Track 176° to BEKKA
• Track 176° to TEMPL
• Intercept RWY 18 LOC

RWY 36: From JAYBI:
• Track 176° to BEKKA
• Track 176° to TEMPL
From TEMPL expect tracking instructions or radar vectors for final

COMMUNICATIONS FAILURE: PROCEDURE IN IMC

- Squawk 7600, comply with vertical navigation requirements, but not below MSA.
- Track via the latest STAR clearance to the nominated runway, then fly the most suitable approach in accordance with ERSA EMERG Section 1.5.

Changes: AWIS FREQ.

MAVSR01-170