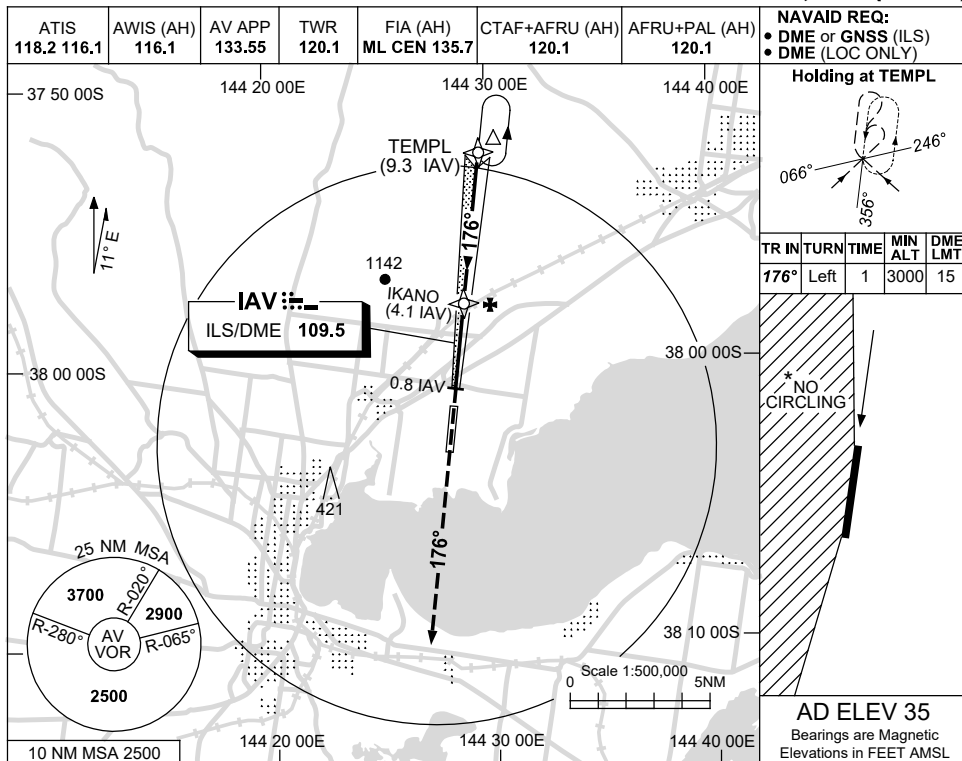


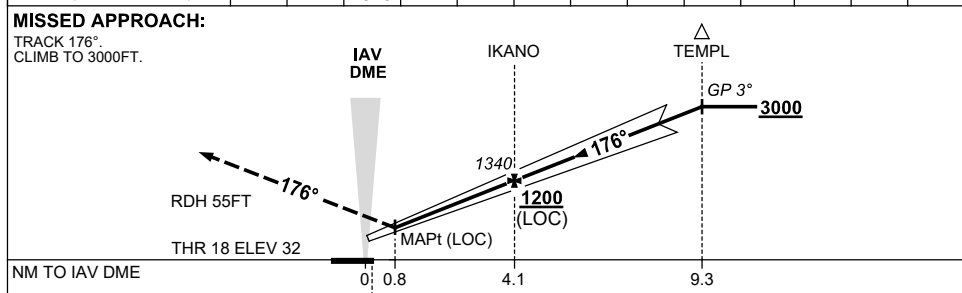
USE QNH

ILS-Z or LOC-Z RWY 18
AVALON, VIC (YMAV)

24 MAR 2022



NM TO IAV DME	1.9	3	4.1	5	6	7	8	9	9.3				
ALT (3° APCH PATH)	620	980	1340	1620	1940	2250	2570	2890	3000				



- NOTES**
- * 1. NO CIRCLING WEST OF RWY 18/36.
 2. HLDG PATTERN NOT CONTAINED WITHIN CTA.

CATEGORY	A	B	C	D
S-I ILS		390 (358) 2.0 (VIS 1.5 WITH ACTUAL QNH)		
S-I LOC		620 (585-3.3)		
CIRCLING *	660 (625-2.4)		760 (725-4.0)	830 (795-5.0)
ALTERNATE	(1125-4.4)		(1225-6.0)	(1295-7.0)

Changes: AWIS FREQ.

MAVII02-170