

**FOR CASA APPROVED
OPERATORS ONLY
USE QNH**

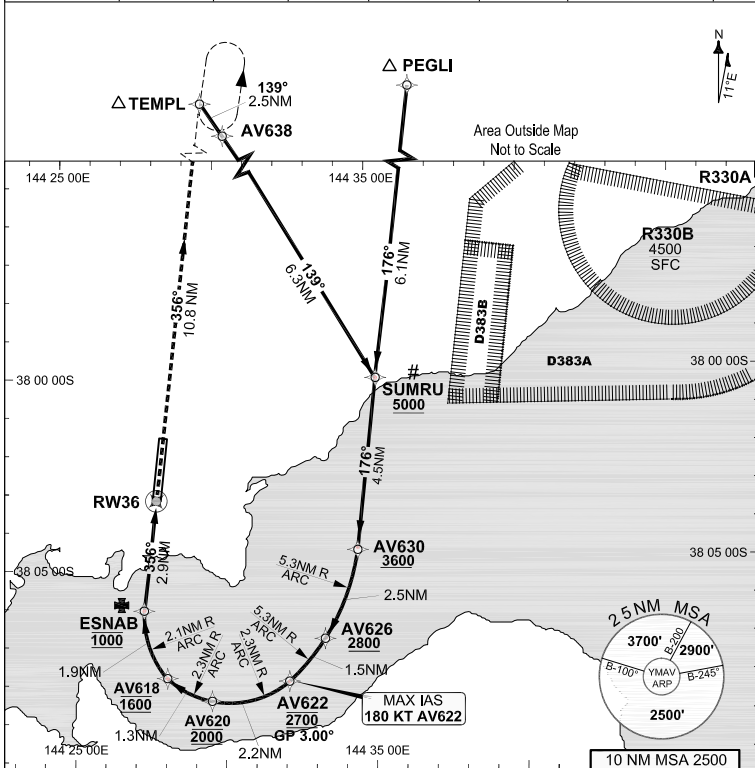
**RNP U RWY 36 (AR)
AVALON, VIC (YMAV)**

24 MAR 2022

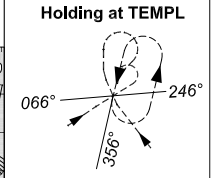
GE PROPRIETARY INFORMATION

COPYRIGHT © MAVERUS, INC., 2021. ALL RIGHTS RESERVED.

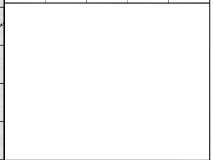
ATIS	AWIS (AH)	AV APP	TWR	UNICOM	FIA (AH) ML CEN	CTAF+AFRU (AH)	AFRU+PAL (AH)	RNV U 36 THR ELEV 35
118.2 116.1	116.1	133.55	120.1	129.3	135.7	120.1	120.1	



RNP AR APCH
 • RF RQ
 • YMAV ACT QNH RQ
 • YMAV ACT TEMP RQ
 • PROC TEMP RANGE
 -3°C TO +48°C

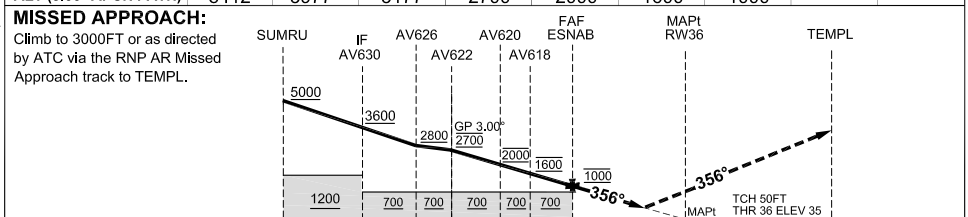


TR	TURN	TIME	MIN ALT	DME LMT
176°	Left	1'	3000	15



AD ELEV 35
 Bearings are Magnetic
 Elevations in FEET AMSL

	SUMRU	AV630	AV626	AV622	AV620	AV618	ESNAB
ALT (3.00° APCH PATH)	5412	3977	3177	2700	2000	1600	1000



NOTES

1. PAPI not coincident with VPA.
2. RNP 0.3 Required from AV638 TO ESNAB.
3. RNP 0.3 Required from PEGLI TO ESNAB.
4. Climb gradient of 4.5% to 3000FT required to reach TEMPL.
5. HLDG pattern not contained within CTA.
6. Latest Intercept Point (LIP)

CATEGORY	A	B	C	D
RNP (0.30)			DA(H) 428 (393 - 2.2)	DA(H) 428 (393 - 2.2)
RNP (0.15)			DA(H) 362 (327 - 1.8)	DA(H) 362 (327 - 1.8)
CIRCLING	N/A		NOT AUTHORISED	NOT AUTHORISED
ALTERNATE				

Changes: BRIEFING STRIP

MAVGN03-170

DO NOT USE FOR NAVIGATION

Prepared by GE Aviation - ICAO Doc 9905 Compliant

© Airservices Australia

