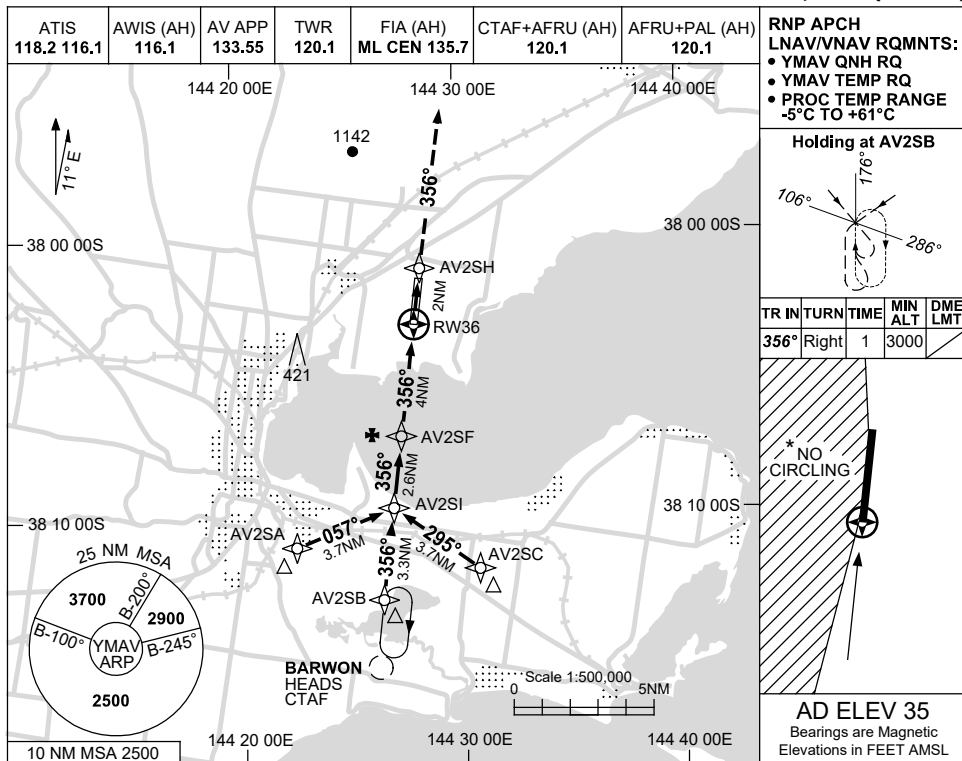


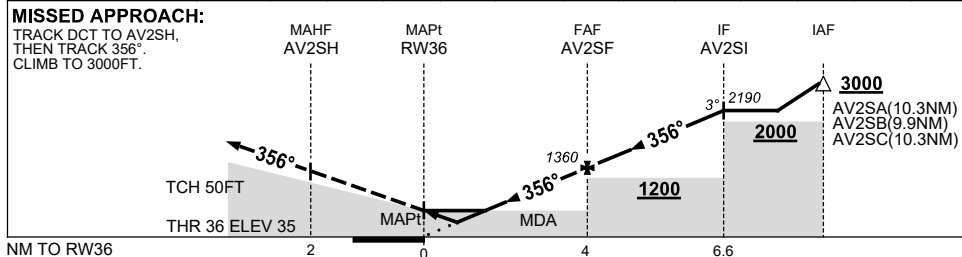
USE QNH

RNP Z RWY 36  
**AVALON, VIC (YMAV)**

30 NOV 2023



NM TO NEXT WPT	RW36	0.9	1.5	2	3	AV2SF	1	2	AV2SI			
ALT (3° APCH PATH)		370	550	720	1040	1360	1680	2000	2190			



**NOTES**

CATEGORY	A	B	C	D
LNAV/VNAV	<b>370</b> (335-1.9)			
LNAV	<b>550</b> (515-2.9)			
CIRCLING *	<b>660</b> (625-2.4)	<b>760</b> (725-4.0)		<b>830</b> (795-5.0)
ALTERNATE	(1125-4.4)		(1225-6.0) (1295-7.0)	

1. MAX IAS:  
INITIAL : 190KT.
- \*2. NO CIRCLING WEST OF RWY 18/36.
3. HOLDING NOT CONTAINED WITHIN CTA.

Changes: WPT NAMING CONVENTION, Editorial.

MAVGN02-177