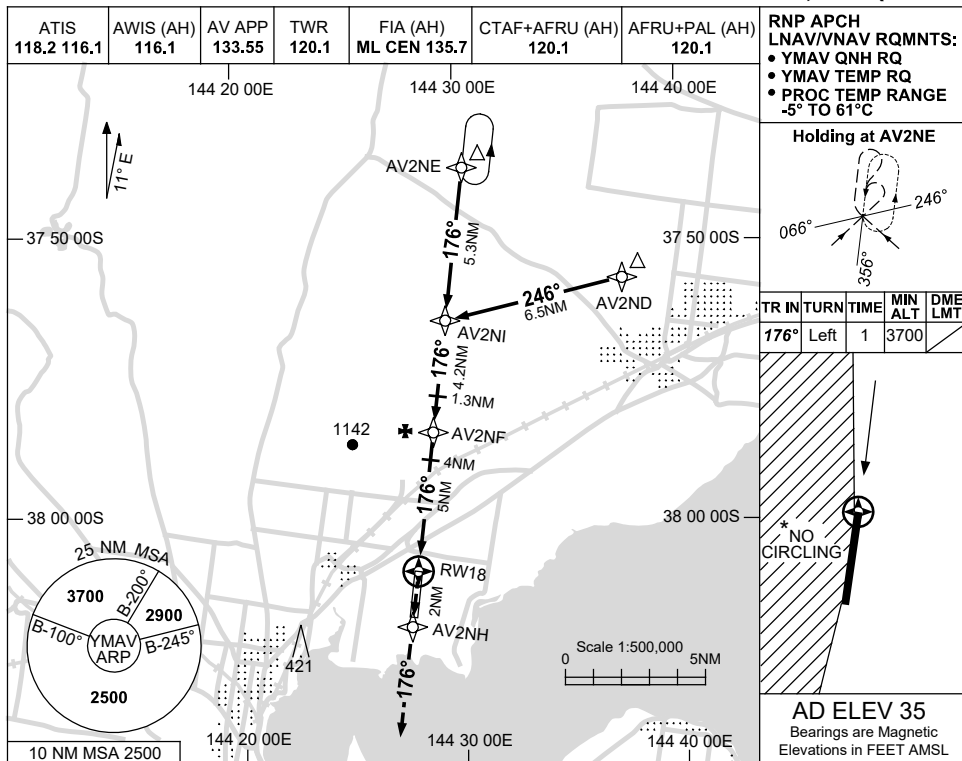


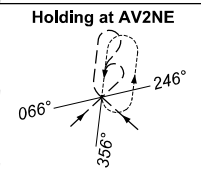
USE QNH

RNP RWY 18
AVALON, VIC (YMAV)

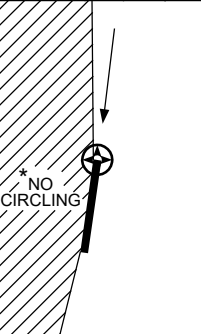
30 NOV 2023



RNP APCH
LNAV/VNAV RQMNTS:
• YMAV QNH RQ
• YMAV TEMP RQ
• PROC TEMP RANGE
-5° TO 61°C

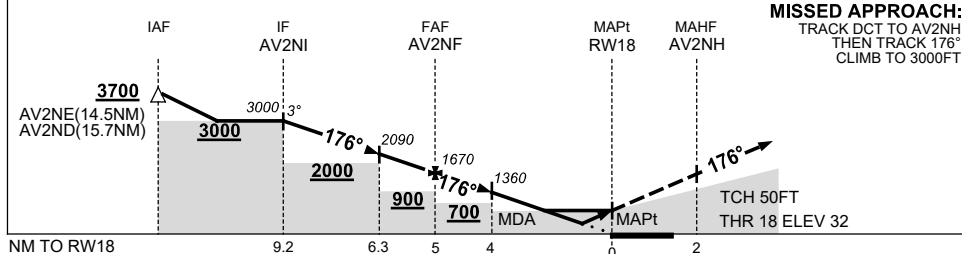


TR	TURN	TIME	MIN ALT	DME LMT
176°	Left	1	3700	



AD ELEV 35
Bearings are Magnetic
Elevations in FEET AMSL

NM TO NEXT WPT	AV2NI	3	2	1.3	AV2NF	4	3	2	1.7	1.1	RW18
ALT (3° APCH PATH)	3000	2630	2310	2090	1670	1360	1040	720	620	430	



MISSED APPROACH:
TRACK DCT TO AV2NH,
THEN TRACK 176°.
CLIMB TO 3000FT.

NOTES

CATEGORY	A	B	C	D
LNAV/VNAV		430 (398-2.2)		
LNAV		620 (585-3.3)		
CIRCLING*	660 (625-2.4)		760 (725-4.0)	830 (795-5.0)
ALTERNATE	(1125-4.4)		(1225-6.0)	(1295-7.0)

- * 1. NO CIRCLING WEST OF RWY 18/36.
- 2. HOLDING NOT CONTAINED WITHIN CTA.

Changes: REVISED PROC, Editorial.

MAVGN01-177